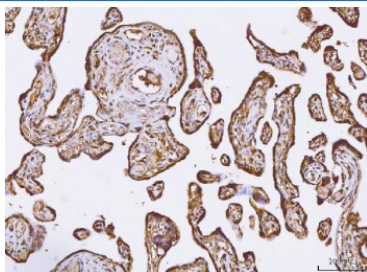


## PKI beta Antibody / PRKACN2 / PKIB (RQ7099)

Catalog No.	Formulation	Size
RQ7099	0.5mg/ml if reconstituted with 0.2ml sterile DI water	100 ug

**Bulk quote request**

<b>Availability</b>	1-3 business days
<b>Species Reactivity</b>	Human
<b>Format</b>	Antigen affinity purified
<b>Clonality</b>	Polyclonal (rabbit origin)
<b>Isotype</b>	Rabbit IgG
<b>Purity</b>	Antigen affinity purified
<b>Buffer</b>	Lyophilized from 1X PBS with 2% Trehalose
<b>UniProt</b>	Q9C010
<b>Localization</b>	Cytoplasmic, nuclear
<b>Applications</b>	Immunohistochemistry (FFPE) : 2-5ug/ml Direct ELISA : 0.1-0.5ug/ml
<b>Limitations</b>	This PKI beta antibody is available for research use only.



IHC staining of FFPE human placental tissue with PKI beta antibody. HIER: boil tissue sections in pH8 EDTA for 20 min and allow to cool before testing.

## Description

cAMP-dependent protein kinase inhibitor beta is a protein that in humans is encoded by the PKIB gene. This gene encodes a member of the cAMP-dependent protein kinase inhibitor family. The encoded protein may play a role in the protein kinase A (PKA) pathway by interacting with the catalytic subunit of PKA, and overexpression of this gene may play a role in prostate cancer. Alternatively spliced transcript variants encoding multiple isoforms have been observed for this gene.

## Application Notes

Optimal dilution of the PKI beta antibody should be determined by the researcher.

## Immunogen

Recombinant human protein (amino acids M1-K78) was used as the immunogen for the PKI beta antibody.

## Storage

After reconstitution, the PKI beta antibody can be stored for up to one month at 4oC. For long-term, aliquot and store at -20oC. Avoid repeated freezing and thawing.