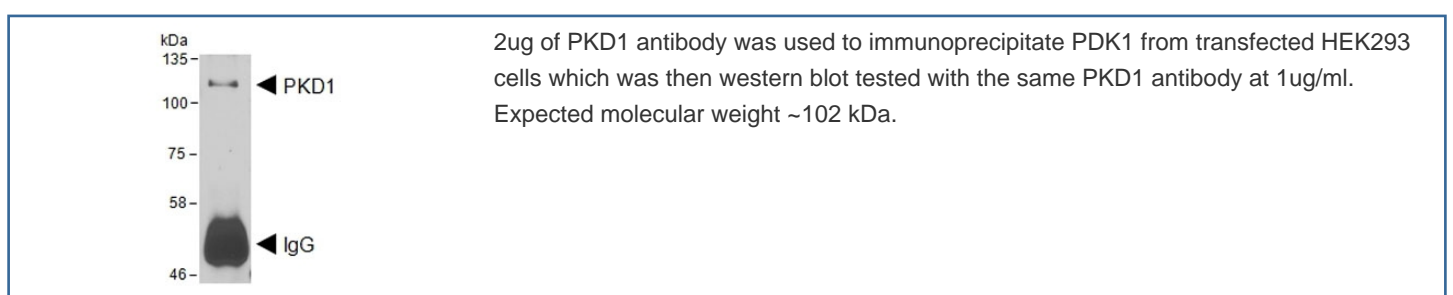
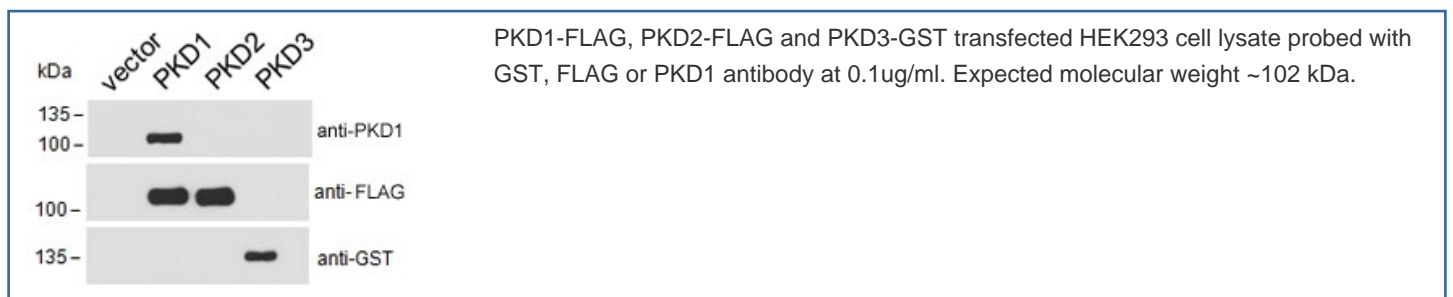


PKD1 Antibody / Protein kinase D1 (R36434)

Catalog No.	Formulation	Size
R36434-100UG	0.5 mg/ml in 1X TBS, pH7.3, with 0.5% BSA (US sourced) and 0.02% sodium azide	100 ug

[Bulk quote request](#)

Availability	1-3 business days
Species Reactivity	Human
Format	Antigen affinity purified
Host	Goat
Clonality	Polyclonal (goat origin)
Isotype	Goat Ig
Purity	Antigen affinity
Gene ID	5587
Applications	Western Blot (transfected Lysate) : 0.1-1ug/ml Immunoprecipitation : 2ug ELISA (peptide) LOD : 1:128000
Limitations	This PKD1 antibody is available for research use only.



Description

Additional name(s) for this target protein: PRKD1; PKC-mu, Serine/threonine-protein kinase D1

Application Notes

Optimal dilution of the PKD1 antibody should be determined by the researcher.

Immunogen

Amino acids QDPDPDHEDANRT were used as the immunogen for this PKD1 antibody.

Storage

Aliquot and store the PKD1 antibody at -20oC.