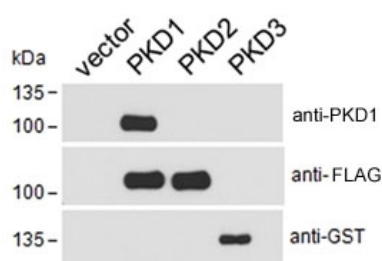


PKD1 Antibody / Serine/threonine-protein kinase D1 / Protein kinase D1 (R36433)

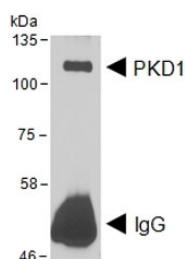
Catalog No.	Formulation	Size
R36433-100UG	0.5 mg/ml in 1X TBS, pH7.3, with 0.5% BSA (US sourced) and 0.02% sodium azide	100 ug

[Bulk quote request](#)

Availability	1-3 business days
Species Reactivity	Human
Predicted Reactivity	Mouse, Rat, Pig
Format	Antigen affinity purified
Clonality	Polyclonal (goat origin)
Isotype	Goat Ig
Purity	Antigen affinity
Gene ID	5587
Applications	Western Blot (transfected Lysate) : 0.1-1ug/ml Immunoprecipitation : 2ug ELISA (peptide) LOD : 1:128000
Limitations	This PKD1 antibody is available for research use only.



PKD1-FLAG, PKD2-FLAG and PKD3-GST transfected HEK293 cell lysate probed with GST, FLAG or PKD1 antibody at 0.1ug/ml. Expected molecular weight ~102 kDa.



2ug of PKD1 antibody was used to immunoprecipitate PDK1 from transfected HEK293 cells which was then western blot tested with the same PKD1 antibody at 1ug/ml. Expected molecular weight ~102 kDa.

Description

Additional name(s) for this target protein: PRKD1; PKC-mu, Serine/threonine-protein kinase D1

Application Notes

Optimal dilution of the PKD1 antibody should be determined by the researcher.

Immunogen

Amino acids QKSPSEFIGREKR were used as the immunogen for this PKD1 antibody.

Storage

Aliquot and store the PKD1 antibody at -20oC.