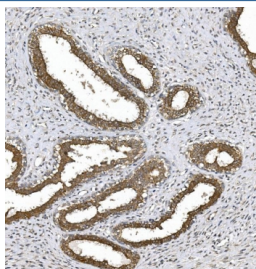


PKC theta Antibody / PRKCQ (RQ5754)

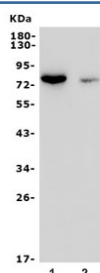
Catalog No.	Formulation	Size
RQ5754	0.5mg/ml if reconstituted with 0.2ml sterile DI water	100 ug

Bulk quote request

Availability	1-3 business days
Species Reactivity	Human
Format	Antigen affinity purified
Host	Rabbit
Clonality	Polyclonal (rabbit origin)
Isotype	Rabbit IgG
Purity	Affinity purified
Buffer	Lyophilized from 1X PBS with 2% Trehalose and 0.025% sodium azide
UniProt	Q04759
Applications	Western Blot : 0.5-1ug/ml Immunohistochemistry : 1-2ug/ml Direct ELISA : 0.1-0.5ug/ml
Limitations	This PKC theta antibody is available for research use only.



IHC staining of FFPE human breast cancer with PKC theta antibody. HIER: boil tissue sections in pH8 EDTA for 20 min and allow to cool before testing.



Western blot testing of human 1) K562 and 2) blood lysate with PKC theta antibody. Predicted molecular weight ~78 kDa.

Description

Protein kinase C theta is an enzyme that in humans is encoded by the PRKCQ gene. Protein kinase C (PKC) is a family of serine- and threonine-specific protein kinases that can be activated by calcium and the second messenger diacylglycerol. PKC family members phosphorylate a wide variety of protein targets and are known to be involved in diverse cellular signaling pathways. PKC family members also serve as major receptors for phorbol esters, a class of tumor promoters. Each member of the PKC family has a specific expression profile and is believed to play a distinct role. The protein encoded by this gene is one of the PKC family members. It is a calcium-independent and phospholipid-dependent protein kinase. This kinase is important for T-cell activation. It is required for the activation of the transcription factors NF-kappaB and AP-1, and may link the T cell receptor (TCR) signaling complex to the activation of the transcription factors.

Application Notes

Optimal dilution of the PKC theta antibody should be determined by the researcher.

Immunogen

Recombinant human protein (amino acids E23-S706) was used as the immunogen for the PKC theta antibody.

Storage

After reconstitution, the PKC theta antibody can be stored for up to one month at 4°C. For long-term, aliquot and store at -20°C. Avoid repeated freezing and thawing.