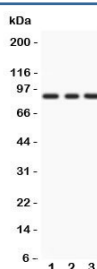


PKC epsilon Antibody / PKCE (R31733)

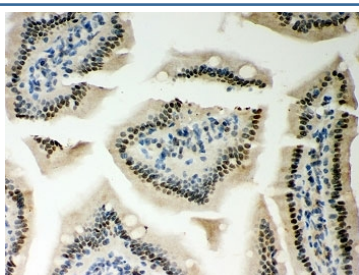
Catalog No.	Formulation	Size
R31733	0.5mg/ml if reconstituted with 0.2ml sterile DI water	100 ug

Bulk quote request

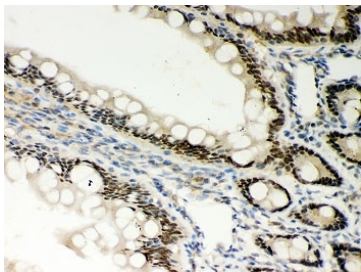
Availability	1-3 business days
Species Reactivity	Human, Mouse, Rat
Format	Antigen affinity purified
Host	Rabbit
Clonality	Polyclonal (rabbit origin)
Isotype	Rabbit IgG
Purity	Antigen affinity
Buffer	Lyophilized from 1X PBS with 2.5% BSA and 0.025% sodium azide
UniProt	Q02156
Applications	Western Blot : 0.5-1ug/ml IHC (FFPE) : 0.5-1ug/ml
Limitations	This PKC epsilon antibody is available for research use only.



Western blot testing of PKC epsilon antibody and Lane 1: rat brain; 2: Mouse brain; 3: human MCF-7. Predicted/observed size ~84KD



IHC-P: PKC epsilon antibody testing of mouse intestine tissue



IHC-P: PKC epsilon antibody testing of rat intestine tissue

Description

Protein kinase C epsilon, also known as PKCE, is an enzyme that in humans is encoded by the PRKCE gene. It is one of the PKC family members. This kinase has been shown to be involved in many different cellular functions, such as apoptosis, cardioprotection from ischemia, heat shock response, as well as insulin exocytosis. It has been found that activation of PRKCE can induce [VR1](#) channel activity at room temperature in the absence of any other agonist. It plays a role in apoptosis signaling pathways in thyroid cells and it has been indicated that a naturally occurring PRKCE mutant that functions as a dominant negative can block cell death triggered by a variety of stimuli. Expression of PRKCE inhibits chemotherapy-induced caspase-3 activation and apoptosis, thereby leading to cell survival.

Application Notes

The stated application concentrations are suggested starting amounts. Titration of the PKC epsilon antibody may be required due to differences in protocols and secondary/substrate sensitivity.

Immunogen

Human partial recombinant protein (AA 53-236) was used as the immunogen for this PKC epsilon antibody.

Storage

After reconstitution, the PKC epsilon antibody can be stored for up to one month at 4°C. For long-term, aliquot and store at -20°C. Avoid repeated freezing and thawing.