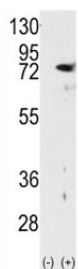


PKC delta Antibody (F50028)

Catalog No.	Formulation	Size
F50028-0.4ML	In 1X PBS, pH 7.4, with 0.09% sodium azide	0.4 ml
F50028-0.08ML	In 1X PBS, pH 7.4, with 0.09% sodium azide	0.08 ml

[Bulk quote request](#)

Availability	1-3 business days
Species Reactivity	Human
Format	Purified
Clonality	Polyclonal (rabbit origin)
Isotype	Rabbit Ig
Purity	Purified
UniProt	Q05655
Applications	Western Blot : 1:1000 IHC (Paraffin) : 1:50-1:100
Limitations	This PKC delta antibody is available for research use only.



Western blot analysis of PKC delta antibody and 293 cell lysate either nontransfected (Lane 1) or transiently transfected with the PRKCD gene (2).

Description

Protein kinase C (PKC) is a family of serine- and threonine-specific protein kinases that can be activated by calcium and second messenger diacylglycerol. PKC family members phosphorylate a wide variety of protein targets and are known to be involved in diverse cellular signaling pathways. PKC family members also serve as major receptors for phorbol esters, a class of tumor promoters. Each member of the PKC family has a specific expression profile and is believed to play a distinct role in cells. PKC delta is one of the PKC family members, and may play a role in antigen-dependent control of B-cell function.

Application Notes

Titration of the PKC delta antibody may be required due to differences in protocols and secondary/substrate sensitivity.

Immunogen

A portion of amino acids 298-326 from the human protein was used as the immunogen for this PKC delta antibody.

Storage

Aliquot the PKC delta antibody and store frozen at -20oC or colder. Avoid repeated freeze-thaw cycles.