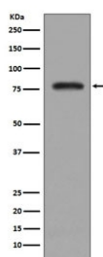


PKC beta 2 Antibody [clone DOC-16] (RQ5129)

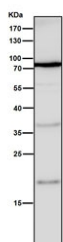
Catalog No.	Formulation	Size
RQ5129	Antibody in PBS with 0.02% sodium azide, 50% glycerol and 0.4-0.5mg/ml BSA	100 ul

[Bulk quote request](#)

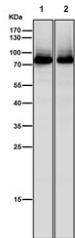
Availability	1-2 weeks
Species Reactivity	Human, Mouse, Rat
Format	Purified
Clonality	Rabbit Monoclonal
Isotype	Rabbit IgG
Clone Name	DOC-16
Purity	Affinity purified
UniProt	P05771
Applications	Western Blot : 1:500-1:2000
Limitations	This PKC beta 2 antibody is available for research use only.



Western blot testing of human K562 cell lysate with PKC beta 2 antibody. Predicted molecular weight ~77 kDa.



Western blot testing of human K562 cell lysate with PKC beta 2 antibody. Predicted molecular weight ~77 kDa.



Western blot testing of 1) mouse brain and 2) rat brain tissue lysate with PKC beta 2 antibody. Predicted molecular weight ~77 kDa.

Description

'Protein kinase C beta type' is a calcium-activated, phospholipid- and diacylglycerol (DAG)-dependent serine/threonine-protein kinase involved in various cellular processes such as regulation of the B-cell receptor (BCR) signalosome, oxidative stress-induced apoptosis, androgen receptor-dependent transcription regulation, insulin signaling and endothelial cells proliferation. [UniProt]

Application Notes

Optimal dilution of the PKC beta 2 antibody should be determined by the researcher.

Immunogen

A synthetic peptide specific to human PKC beta 2 / PRKCB2 was used as the immunogen for the PKC beta 2 antibody.

Storage

Store the PKC beta 2 antibody at -20oC.