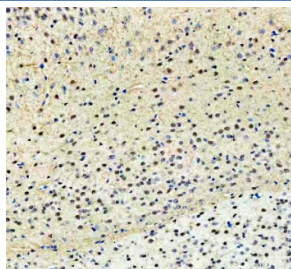


PKC beta 1 Antibody / PRKCB1 (RQ4656)

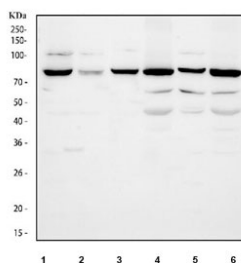
Catalog No.	Formulation	Size
RQ4656	0.5mg/ml if reconstituted with 0.2ml sterile DI water	100 ug

Bulk quote request

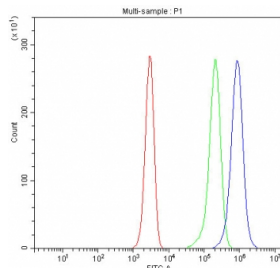
Availability	1-3 business days
Species Reactivity	Human, Mouse, Rat
Format	Antigen affinity purified
Host	Rabbit
Clonality	Polyclonal (rabbit origin)
Isotype	Rabbit IgG
Purity	Antigen affinity purified
Buffer	Lyophilized from 1X PBS with 2% Trehalose
UniProt	P05771
Localization	Nuclear, cytoplasmic, membrane
Applications	Western Blot : 0.5-1ug/ml Immunohistochemistry (FFPE) : 2-5ug/ml Flow Cytometry : 1-3ug/million cells
Limitations	This PKC beta antibody is available for research use only.



IHC staining of FFPE mouse brain tissue with PKC beta antibody. HIER: boil tissue sections in pH8 EDTA for 20 min and allow to cool before testing.



Western blot testing of 1) human K562, 2) human HEL, 3) human Jurkat, 4) rat brain, 5) rat PC-12 and 6) mouse brain tissue lysate with PKC beta antibody. Predicted molecular weight ~76 kDa.



Flow cytometry testing of fixed and permeabilized human Jurkat cells with PKC beta antibody at 1ug/million cells (blocked with goat sera); Red=cells alone, Green=isotype control, Blue= PKC beta antibody.

Description

Protein kinase C beta type is an enzyme that in humans is encoded by the PRKCB gene. It is a member of the protein kinase C (PKC) gene family. PKC family members phosphorylate a wide variety of protein targets and are known to be involved in diverse cellular signaling pathways. PKC family members also serve as major receptors for phorbol esters, a class of tumor promoters. This protein kinase has been reported to be involved in many different cellular functions, such as B cell activation, apoptosis induction, endothelial cell proliferation, and intestinal sugar absorption. It has been found that PRKCB activated by oxidative conditions in the cell, induces phosphorylation of p66(SHC) and triggers mitochondrial accumulation of the protein after it is recognized by the prolyl isomerase PIN1.

Application Notes

Optimal dilution of the PKC beta antibody should be determined by the researcher.

Immunogen

Amino acids NFDKEFTRQPVELTPTDKLFIMNLDQNE were used as the immunogen for the PKC beta antibody.

Storage

After reconstitution, the PKC beta antibody can be stored for up to one month at 4°C. For long-term, aliquot and store at -20°C. Avoid repeated freezing and thawing.