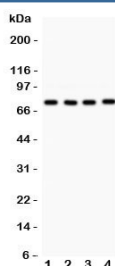


PKC alpha Antibody (R31731)

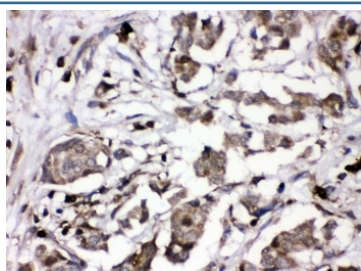
Catalog No.	Formulation	Size
R31731	0.5mg/ml if reconstituted with 0.2ml sterile DI water	100 ug

Bulk quote request

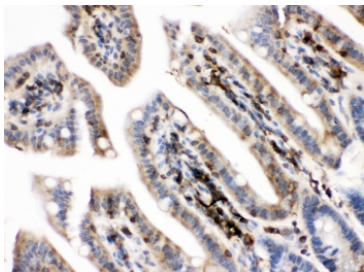
Availability	1-3 business days
Species Reactivity	Human, Mouse, Rat
Format	Antigen affinity purified
Clonality	Polyclonal (rabbit origin)
Isotype	Rabbit IgG
Purity	Antigen affinity
Buffer	Lyophilized from 1X PBS with 2.5% BSA and 0.025% sodium azide
Gene ID	5578
Applications	Western Blot : 0.5-1ug/ml Immunohistochemistry (FFPE) : 1-2ug/ml
Limitations	This PKC alpha antibody is available for research use only.



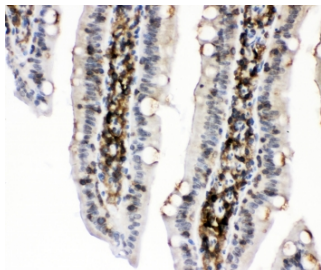
Western blot testing of PKC alpha antibody and Lane 1: rat brain; 2: mouse brain; 3: (m) heart; 4: human 22RV1. Predicted molecular weight: ~77 kDa.



IHC staining of FFPE human breast cancer with PKC alpha antibody at 1ug/ml. HIER: boil tissue sections in pH6, 10mM citrate buffer, for 10-20 min and allow to cool before testing.



IHC staining of FFPE mouse intestinal tissue with PKC alpha antibody at 1ug/ml. HIER: boil tissue sections in pH6, 10mM citrate buffer, for 10-20 min and allow to cool before testing.



IHC staining of FFPE rat intestinal tissue with PKC alpha antibody at 1ug/ml. HIER: boil tissue sections in pH6, 10mM citrate buffer, for 10-20 min and allow to cool before testing.

Description

Protein kinase C is the major phorbol ester receptor. Activation of PKC by calcium ions and the second messenger diacylglycerol is thought to play a central role in the induction of cellular responses to a variety of ligand-receptor systems and in the regulation of cellular responsiveness to external stimuli. Three of these, termed alpha, beta and gamma, are highly homologous. PRKCA1 is mapped to 17q22-q23.2. PRKCA1 regulates cardiac contractility and propensity toward heart failure.

Application Notes

The stated application concentrations are suggested starting amounts. Titration of the PKC alpha antibody may be required due to differences in protocols and secondary/substrate sensitivity.

Immunogen

Human partial recombinant protein (AA 153-342) was used as the immunogen for this PKC alpha antibody.

Storage

After reconstitution, the PKC alpha antibody can be stored for up to one month at 4oC. For long-term, aliquot and store at -20oC. Avoid repeated freezing and thawing.