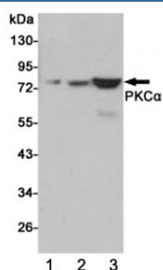


## PKC alpha Antibody / aPKC [clone 3G11-G11-G11] (F54061)

Catalog No.	Formulation	Size
F54061-0.1ML	In PBS with 50% glycerol and 0.03% ProClin 300	0.1 ml

**Bulk quote request**

<b>Availability</b>	1-3 business days
<b>Species Reactivity</b>	Rat, Primate
<b>Predicted Reactivity</b>	Human
<b>Format</b>	Purified
<b>Host</b>	Mouse
<b>Clonality</b>	Monoclonal (mouse origin)
<b>Isotype</b>	Mouse IgG2a
<b>Clone Name</b>	3G11-G11-G11
<b>Purity</b>	Protein G affinity
<b>UniProt</b>	P17252
<b>Applications</b>	Western Blot : 1:1000
<b>Limitations</b>	This PKC alpha antibody is available for research use only.



Western blot testing of 1) human C2C12, 2) monkey COS7 and 3) rat C6 cell lysates using PKC alpha antibody at 1:1000. Predicted molecular weight ~77 kDa.

## Description

This is a calcium-activated, phospholipid-dependent, serine- and threonine-specific enzyme. May play a role in cell motility by phosphorylating CSPG4. PKC is activated by diacylglycerol which in turn phosphorylates a range of cellular proteins. PKC also serves as the receptor for phorbol esters, a class of tumor promoters.

## Application Notes

The stated application concentrations are suggested starting points. Titration of the PKC alpha antibody may be required due to differences in protocols and secondary/substrate sensitivity.

## **Immunogen**

A synthetic PKC alpha/aPKC peptide was used as the immunogen for the PKC alpha antibody.

## **Storage**

Store the PKC alpha antibody at -20oC.