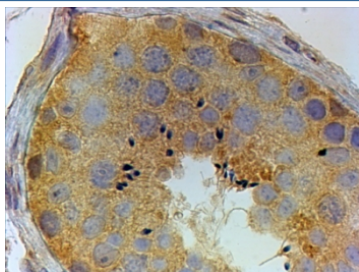


PIWIL1 Antibody (R35993)

Catalog No.	Formulation	Size
R35993-100UG	0.5 mg/ml in 1X TBS, pH7.3, with 0.5% BSA (US sourced) and 0.02% sodium azide	100 ug

[Bulk quote request](#)

Availability	1-3 business days
Species Reactivity	Human
Predicted Reactivity	Dog, Mouse, Pig, Rat
Format	Antigen affinity purified
Host	Goat
Clonality	Polyclonal (goat origin)
Isotype	Goat Ig
Purity	Antigen affinity
Gene ID	9271
Applications	Immunohistochemistry (FFPE) : 4-6ug/ml ELISA (peptide) LOD : 1:64000
Limitations	This PIWIL1 antibody is available for research use only.



IHC testing of FFPE human testis with PIWIL1 antibody at 4ug/ml. HIER: steamed with pH6 citrate buffer, HRP-staining.

Description

Additional name(s) for this target protein: Piwi-like 1, HIWI

Application Notes

Optimal dilution of the PIWIL1 antibody should be determined by the researcher.

Immunogen

Amino acids SNRKDKYDAIKKY were used as the immunogen for this PIWIL1 antibody.

Storage

Aliquot and store the PIWIL1 antibody at -20oC.