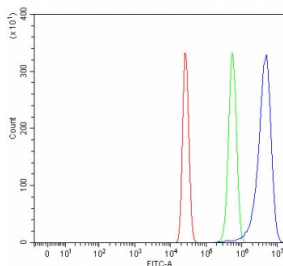


Pirh2 Antibody / RCHY1 (RQ7813)

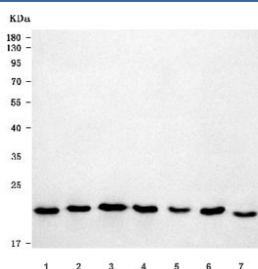
Catalog No.	Formulation	Size
RQ7813	0.5mg/ml if reconstituted with 0.2ml sterile DI water	100 ug

[Bulk quote request](#)

Availability	1-3 business days
Species Reactivity	Human, Mouse, Rat
Format	Antigen affinity purified
Host	Rabbit
Clonality	Polyclonal (rabbit origin)
Isotype	Rabbit IgG
Purity	Antigen affinity purified
Buffer	Lyophilized from 1X PBS with 2% Trehalose
UniProt	Q96PM5
Applications	Western Blot : 0.5-1ug/ml Flow Cytometry : 1-3ug/million cells Direct ELISA : 0.1-0.5ug/ml
Limitations	This Pirh2 antibody is available for research use only.



Flow cytometry testing of human HepG2 cells with Pirh2 antibody at 1ug/million cells (blocked with goat sera); Red=cells alone, Green=isotype control, Blue= Pirh2 antibody.



Western blot testing of 1) human HeLa, 2) human HepG2, 3) human Daudi, 4) human 293T, 5) rat liver, 6) rat PC-12 and 7) mouse liver tissue lysate with Pirh2 antibody. Predicted molecular weight: 21-30 kDa (multiple isoforms) with an additional possible ~8 kDa isoform.

Description

RING finger and CHY zinc finger domain-containing protein 1, also called E3 ubiquitin-protein ligase Pirh2, is a protein that in humans is encoded by the RCHY1 gene. The protein encoded by this gene has ubiquitin ligase activity. It mediates E3-dependent ubiquitination and proteasomal degradation of target proteins, including tumor protein 53, histone deacetylase 1, and cyclin-dependent kinase inhibitor 1B, thus regulating their levels and cell cycle progression. Alternatively spliced transcript variants encoding different isoforms have been described for this gene.

Application Notes

Optimal dilution of the Pirh2 antibody should be determined by the researcher.

Immunogen

E. coli-derived recombinant human protein (amino acids Q17-Q250) was used as the immunogen for the Pirh2 antibody.

Storage

After reconstitution, the Pirh2 antibody can be stored for up to one month at 4°C. For long-term, aliquot and store at -20°C. Avoid repeated freezing and thawing.