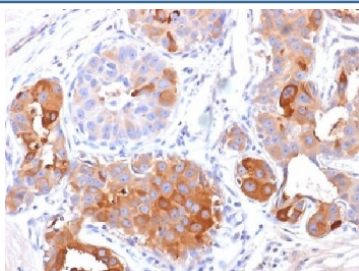


PIP Antibody / Prolactin Inducible Protein / GCDFP-15 [clone PIP/1571] (V3281)

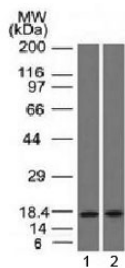
Catalog No.	Formulation	Size
V3281-100UG	0.2 mg/ml in 1X PBS with 0.1 mg/ml BSA (US sourced) and 0.05% sodium azide	100 ug
V3281-20UG	0.2 mg/ml in 1X PBS with 0.1 mg/ml BSA (US sourced) and 0.05% sodium azide	20 ug
V3281SAF-100UG	1 mg/ml in 1X PBS; BSA free, sodium azide free	100 ug

Bulk quote request

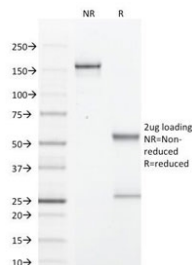
Availability	1-3 business days
Species Reactivity	Human
Format	Purified
Clonality	Monoclonal (mouse origin)
Isotype	Mouse IgG2a, kappa
Clone Name	PIP/1571
Purity	Protein G affinity chromatography
UniProt	P12273
Localization	Cytoplasmic (Golgi bodies), secreted
Applications	Flow Cytometry : 0.5-1ug/10 ⁶ cells Immunofluorescence : 0.5-1ug/ml Western Blot : 0.5-1ug/ml Immunohistochemistry (FFPE) : 0.5-1ug/ml for 30 min at RT
Limitations	This PIP antibody is available for research use only.



IHC testing of FFPE human breast carcinoma with PIP antibody (clone PIP/1571).
Required HIER: boil tissue sections in 10mM Tris with 1mM EDTA, pH 9, for 10-20.



Western blot testing of human 1) pancreas and 2) HepG2 lysate with PIP antibody (clone PIP/1571). Expected molecular weight ~15 kDa.



SDS-PAGE Analysis of Purified, BSA-Free PIP Antibody (clone PIP/1571). Confirmation of Integrity and Purity of the Antibody.

Description

It recognizes a protein of 15kDa, identified as Gross cystic disease fluid protein 15 (GCDFP-15), also called Prolactin Inducible Protein, or PIP. It is a major protein component of benign breast gross cysts. It is a known marker of breast cancer, as it is found in approximately 50% of all breast cancer specimens. PIP is a prolactin and androgen controlled protein. This antibody is useful in the identification of metastatic breast carcinoma, or fluid analysis.

Application Notes

Titering of the PIP antibody may be required for optimal performance.

Immunogen

A human partial recombinant protein corresponding to amino acids 41-146 was used as the immunogen for the PIP antibody.

Storage

Store the PIP antibody at 2-8°C (with azide) or aliquot and store at -20°C or colder (without azide).