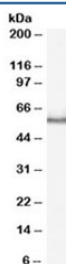


PINK1 Antibody (R35272)

Catalog No.	Formulation	Size
R35272-100UG	0.5 mg/ml in 1X TBS, pH7.3, with 0.5% BSA (US sourced) and 0.02% sodium azide	100 ug

[Bulk quote request](#)

Availability	1-3 business days
Species Reactivity	Rat
Predicted Reactivity	Human
Format	Antigen affinity purified
Clonality	Polyclonal (goat origin)
Isotype	Goat Ig
Purity	Antigen affinity
Gene ID	65018
Applications	Western Blot : 1-3ug/ml ELISA (peptide) LOD : 1:8000
Limitations	This PINK1 antibody is available for research use only.



Western blot testing of rat testis lysate with PINK1 antibody at 1ug/ml. Predicted molecular weight: 60-70 kDa.

Description

Additional name(s) for this target protein: PTEN induced putative kinase 1

Application Notes

Optimal dilution of the PINK1 antibody should be determined by the researcher.

Immunogen

Amino acids QGKAHLESRSYQEAQ were used as the immunogen for this PINK1 antibody.

Storage

Aliquot and store the PINK1 antibody at -20oC.