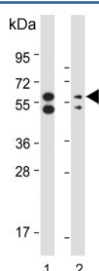


PINK1 Antibody [clone 38CT18.2.6] (F40407)

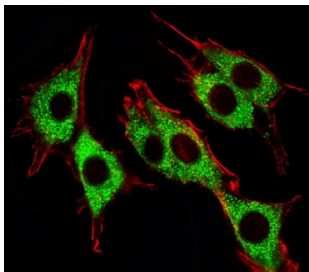
Catalog No.	Formulation	Size
F40407-0.2ML	In 1X PBS, pH 7.4, with 0.09% sodium azide	0.2 ml
F40407-0.05ML	In 1X PBS, pH 7.4, with 0.09% sodium azide	0.05 ml

[Bulk quote request](#)

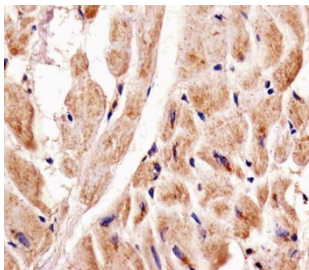
Availability	1-3 business days
Species Reactivity	Human
Format	Purified
Host	Mouse
Clonality	Monoclonal (mouse origin)
Isotype	Mouse IgG1
Clone Name	38CT18.2.6
Purity	Purified
UniProt	Q9BXM7
Localization	Cytoplasmic
Applications	IHC (Paraffin) : 1:25-100 Immunofluorescence : 1:25 Western Blot : 1:100-2000
Limitations	This PINK1 antibody is available for research use only.



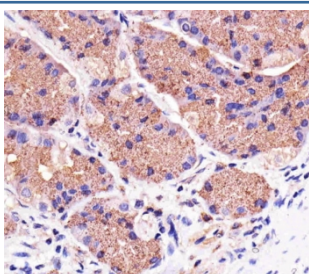
Western blot testing of human 1) HeLa and 2) MCF7 cell lysate with PINK1 antibody.
Predicted molecular weight: 60-70 kDa.



Fluorescent image of PC12 cells stained with Pink1 antibody. Ab was diluted at 1:25 dilution. An Alexa Fluor 488 secondary was used (green). Cytoplasmic actin was counterstained with Alexa Fluor 555 conjugated with Phalloidin (red).



Immunohistochemical analysis of paraffin-embedded human heart using Pink1 antibody at 1:25 dilution.



Immunohistochemical analysis of paraffin-embedded human stomach using Pink1 antibody at 1:25 dilution.

Description

This gene encodes a serine/threonine protein kinase that localizes to mitochondria. It is thought to protect cells from stress-induced mitochondrial dysfunction. Mutations in this gene cause one form of autosomal recessive early-onset Parkinson disease.

Application Notes

Titration of the PINK1 antibody may be required due to differences in protocols and secondary/substrate sensitivity.

Immunogen

Recombinant protein was used to produced this monoclonal PINK1 antibody.

Storage

Aliquot the PINK1 antibody and store frozen at -20oC or colder. Avoid repeated freeze-thaw cycles.