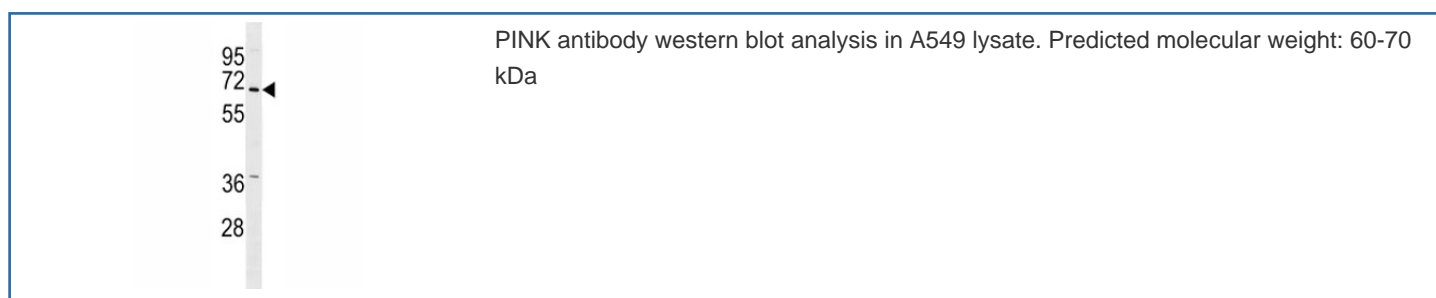


## PINK Antibody (F49624)

Catalog No.	Formulation	Size
F49624-0.4ML	In 1X PBS, pH 7.4, with 0.09% sodium azide	0.4 ml
F49624-0.08ML	In 1X PBS, pH 7.4, with 0.09% sodium azide	0.08 ml

[Bulk quote request](#)

<b>Availability</b>	1-3 business days
<b>Species Reactivity</b>	Human, Mouse
<b>Format</b>	Purified
<b>Clonality</b>	Polyclonal (rabbit origin)
<b>Isotype</b>	Rabbit Ig
<b>Purity</b>	Purified
<b>UniProt</b>	Q9BXM7
<b>Applications</b>	Western Blot : 1:1000
<b>Limitations</b>	This PINK antibody is available for research use only.



## Description

Parkinson is the second most common neurodegenerative disease after Alzheimers. About 1 percent of people over the age of 65 and 3 percent of people over the age of 75 are affected by the disease. Defects in PINK1 are the cause of autosomal recessive early-onset Parkinson's disease 6 (PARK6). Strong evidence indicates that, although important in mendelian forms of Parkinson's disease (PD), PINK1 does not influence the cause of sporadic nonmendelian forms of PD.

## Application Notes

Titration of the PINK antibody may be required due to differences in protocols and secondary/substrate sensitivity.

## **Immunogen**

A portion of amino acids 237-266 from human PINK1 was used as the immunogen for this PINK antibody.

## **Storage**

Aliquot the PINK antibody and store frozen at -20oC or colder. Avoid repeated freeze-thaw cycles.