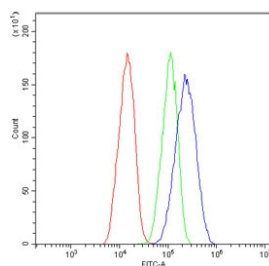


Pinin Antibody / PNN / DRSP (RQ5834)

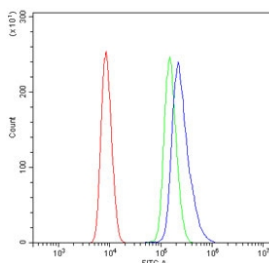
Catalog No.	Formulation	Size
RQ5834	0.5mg/ml if reconstituted with 0.2ml sterile DI water	100 ug

Bulk quote request

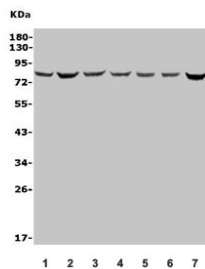
Availability	1-3 business days
Species Reactivity	Human, Mouse, Rat
Format	Antigen affinity purified
Host	Rabbit
Clonality	Polyclonal (rabbit origin)
Isotype	Rabbit IgG
Purity	Affinity purified
Buffer	Lyophilized from 1X PBS with 2% Trehalose and 0.025% sodium azide
UniProt	Q9H307
Applications	Western Blot : 0.5-1ug/ml Flow Cytometry : 1-3ug/million cells Direct ELISA : 0.1-0.5ug/ml
Limitations	This Pinin antibody is available for research use only.



Flow cytometry testing of human HepG2 cells with Pinin antibody at 1ug/million cells (blocked with goat sera); Red=cells alone, Green=isotype control, Blue= Pinin antibody.



Flow cytometry testing of human HL-60 cells with Pinin antibody at 1ug/million cells (blocked with goat sera); Red=cells alone, Green=isotype control, Blue= Pinin antibody.



Western blot testing of human 1) HeLa, 2) HepG2, 3) HL-60, 4) K562, 5) rat liver, 6) rat kidney, 7) mouse Neuro-2a lysate with Pinin antibody. Predicted molecular weight ~82 kDa.

Description

Pinin is a protein that in humans is encoded by the PNN gene. By yeast 2-hybrid analysis of HeLa cells, followed by sequence analysis, it was found that epitope-tagged human PNN interacted with the serine/arginine (SR)-rich proteins SRP75/SRSF4, SRM300/SRRM2, and SRRP130/PNISR. Truncation analysis revealed that the polyserine/RS domain of PNN and flanking sequences participated in binding to these SR proteins. The 4 proteins colocalized in the nucleus of HCE-T cells, and overexpression of any of these proteins affected the distribution of the others between nuclear speckles and nucleoplasm.

Application Notes

Optimal dilution of the Pinin antibody should be determined by the researcher.

Immunogen

Recombinant human protein (amino acids A2-L241) was used as the immunogen for the Pinin antibody.

Storage

After reconstitution, the Pinin antibody can be stored for up to one month at 4oC. For long-term, aliquot and store at -20oC. Avoid repeated freezing and thawing.