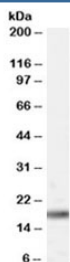


PIN1 Antibody (R34464)

Catalog No.	Formulation	Size
R34464-100UG	0.5 mg/ml in 1X TBS, pH7.3, with 0.5% BSA (US sourced) and 0.02% sodium azide	100 ug

[Bulk quote request](#)

Availability	1-3 business days
Species Reactivity	Human, Mouse, Rat
Predicted Reactivity	Dog
Format	Antigen affinity purified
Clonality	Polyclonal (goat origin)
Isotype	Goat Ig
Purity	Antigen affinity
Gene ID	5300
Applications	Western Blot : 0.2-0.6ug/ml ELISA (peptide) LOD : 1:128000
Limitations	This PIN1 antibody is available for research use only.



Western blot testing of rat brain lysate with PIN1 antibody at 0.2ug/ml. Expected molecular weight ~18kDa.

Description

Additional name(s) for this target protein: Protein (peptidylprolyl cis/trans isomerase) NIMA-interacting 1

Application Notes

Optimal dilution of the PIN1 antibody should be determined by the researcher.

Immunogen

Amino acids KHSQSRRPSSWRQEKITR were used as the immunogen for this PIN1 antibody.

Storage

Aliquot and store the PIN1 antibody at -20oC.