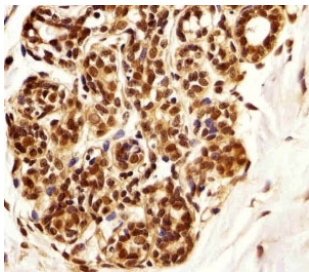


PIN1 Antibody [clone 855CT1.7.5] (F52353)

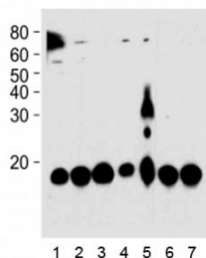
Catalog No.	Formulation	Size
F52353-0.4ML	In 1X PBS, pH 7.4, with 0.09% sodium azide	0.4 ml
F52353-0.08ML	In 1X PBS, pH 7.4, with 0.09% sodium azide	0.08 ml

[Bulk quote request](#)

Availability	1-3 business days
Species Reactivity	Human, Mouse, Rat
Format	Purified
Host	Mouse
Clonality	Monoclonal (mouse origin)
Isotype	Mouse IgG1
Clone Name	855CT1.7.5
Purity	Purified
UniProt	Q13526
Applications	IHC (Paraffin) : 1:25 Western Blot : 1:1000
Limitations	This PIN1 antibody is available for research use only.



Immunohistochemical analysis of paraffin-embedded human breast using PIN1 antibody at 1:25 dilution.



PIN1 antibody western blot analysis in 1) HeLa, 2) 293, 3) mouse NIH3T3, 4) rat PC-12, 5) COS-7 cell line, 6) mouse brain, and 7) rat brain tissue lysate. Expected molecular weight ~18kDa.

Description

Essential PPlase that regulates mitosis presumably by interacting with NIMA and attenuating its mitosis-promoting activity. Displays a preference for an acidic residue N-terminal to the isomerized proline bond. Catalyzes pSer/Thr-Pro cis/trans isomerizations. Down-regulates kinase activity of BTK. Can transactivate multiple oncogenes and induce centrosome amplification, chromosome instability and cell transformation. Required for the efficient dephosphorylation and recycling of RAF1 after mitogen activation.

Application Notes

Titration of the PIN1 antibody may be required due to differences in protocols and secondary/substrate sensitivity.

Immunogen

Purified His-tagged protein was used to produced this monoclonal PIN1 antibody.

Storage

Aliquot the PIN1 antibody and store frozen at -20oC or colder. Avoid repeated freeze-thaw cycles.