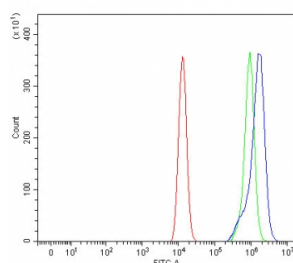


PILRA Antibody / Paired immunoglobulin-like type 2 receptor alpha (RQ8058)

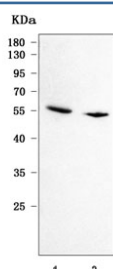
Catalog No.	Formulation	Size
RQ8058	0.5mg/ml if reconstituted with 0.2ml sterile DI water	100 ug

Bulk quote request

Availability	1-3 business days
Species Reactivity	Human
Format	Antigen affinity purified
Clonality	Polyclonal (rabbit origin)
Isotype	Rabbit IgG
Purity	Antigen affinity purified
Buffer	Lyophilized from 1X PBS with 2% Trehalose
UniProt	Q9UKJ1
Applications	Western Blot : 0.5-1ug/ml Flow Cytometry : 1-3ug/million cells Direct ELISA : 0.1-0.5ug/ml
Limitations	This PILRA antibody is available for research use only.



Flow cytometry testing of fixed and permeabilized human HEL cells with PILRA antibody at 1ug/million cells (blocked with goat sera); Red=cells alone, Green=isotype control, Blue= PILRA antibody.



Western blot testing of human 1) HeLa and 2) Jurkat cell lysate with PILRA antibody. Predicted molecular weight ~34 kDa but may be observed at higher molecular weights due to glycosylation.

Description

Paired immunoglobulin like type 2 receptor alpha is a protein that in humans is encoded by the PILRA gene. Cell signaling pathways rely on a dynamic interaction between activating and inhibiting processes. SHP-1-mediated dephosphorylation of protein tyrosine residues is central to the regulation of several cell signaling pathways. Two types of inhibitory receptor superfamily members are immunoreceptor tyrosine-based inhibitory motif (ITIM)-bearing receptors and their non-ITIM-bearing, activating counterparts. Control of cell signaling via SHP-1 is thought to occur through a balance between PILRalpha-mediated inhibition and PILRbeta-mediated activation. These paired immunoglobulin-like receptor genes are located in a tandem head-to-tail orientation on chromosome 7. This particular gene encodes the ITIM-bearing member of the receptor pair, which functions in the inhibitory role. Alternative splicing has been observed at this locus and three variants, each encoding a distinct isoform, are described.

Application Notes

Optimal dilution of the PILRA antibody should be determined by the researcher.

Immunogen

E. coli-derived recombinant human protein (amino acids T154-A303) was used as the immunogen for the PILRA antibody.

Storage

After reconstitution, the PILRA antibody can be stored for up to one month at 4°C. For long-term, aliquot and store at -20°C. Avoid repeated freezing and thawing.