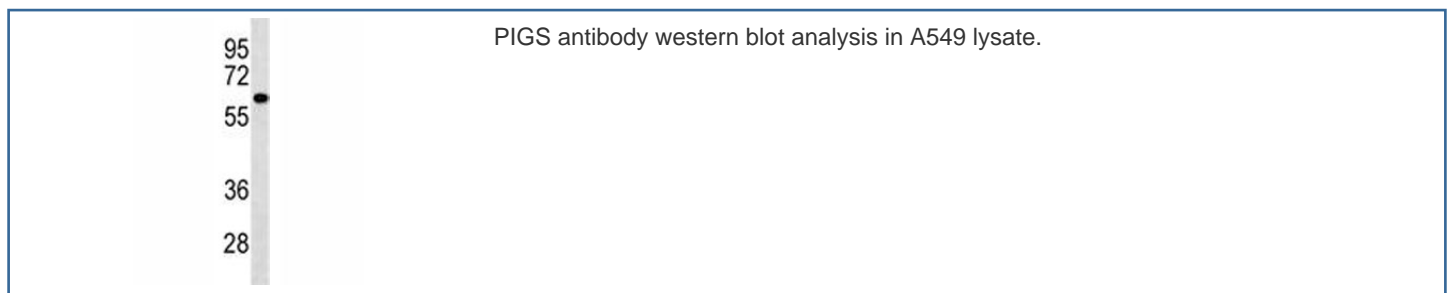


PIGS Antibody / Phosphatidylinositol glycan class S (F46302)

| Catalog No. | Formulation | Size |
|---------------|--|---------|
| F46302-0.4ML | In 1X PBS, pH 7.4, with 0.09% sodium azide | 0.4 ml |
| F46302-0.08ML | In 1X PBS, pH 7.4, with 0.09% sodium azide | 0.08 ml |

[Bulk quote request](#)

| | |
|---------------------------|--|
| Availability | 1-3 business days |
| Species Reactivity | Human |
| Format | Antigen affinity purified |
| Host | Rabbit |
| Clonality | Polyclonal (rabbit origin) |
| Isotype | Rabbit Ig |
| Purity | Antigen affinity |
| UniProt | Q96S52 |
| Applications | Western Blot : 1:1000 |
| Limitations | This PIGS antibody is available for research use only. |



Description

This gene encodes a protein that is involved in GPI-anchor biosynthesis. The glycosylphosphatidylinositol (GPI) anchor is a glycolipid found on many blood cells and serves to anchor proteins to the cell surface. This gene encodes an essential component of the multisubunit enzyme, GPI transamidase. GPI transamidase mediates GPI anchoring in the endoplasmic reticulum, by catalyzing the transfer of fully assembled GPI units to proteins. [provided by RefSeq].

Application Notes

Titration of the PIGS antibody may be required due to differences in protocols and secondary/substrate sensitivity.

Immunogen

A portion of amino acids 527-555 from the human protein was used as the immunogen for this PIGS antibody.

Storage

Aliquot the PIGS antibody and store frozen at -20oC or colder. Avoid repeated freeze-thaw cycles.