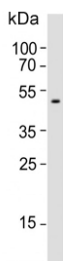


Pigment epithelium-derived factor Antibody / PEDF / SERPINF1 (F54918)

Catalog No.	Formulation	Size
F54918-0.4ML	In 1X PBS, pH 7.4, with 0.09% sodium azide	0.4 ml
F54918-0.08ML	In 1X PBS, pH 7.4, with 0.09% sodium azide	0.08 ml

Bulk quote request

Availability	1-3 business days
Species Reactivity	Human
Format	Purified
Host	Rabbit
Clonality	Polyclonal (rabbit origin)
Isotype	Rabbit Ig
Purity	Purified
UniProt	P36955
Localization	Cytoplasmic, secreted
Applications	Western Blot : 1:500-1:1000 Flow Cytometry : 1:10-1:50 (1x10e6 cells) Immunohistochemistry (FFPE) : 1:10-1:50
Limitations	This Pigment epithelium-derived factor antibody is available for research use only.

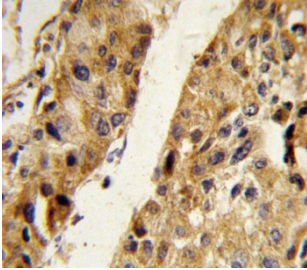


Western blot testing of human blood plasma lysate with Pigment epithelium-derived factor antibody. Predicted molecular weight ~46 kDa.

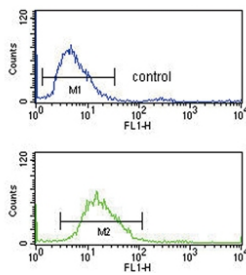
kDa

72
55
36
28

Western blot testing of human HEK293 lysate with Pigment epithelium-derived factor antibody. Predicted molecular weight ~46 kDa.



IHC testing of FFPE human hepatocellular carcinoma tissue with Pigment epithelium-derived factor antibody. HIER: steam section in pH6 citrate buffer for 20 min and allow to cool prior to staining.



Flow cytometry testing of human HEK293 cells with Pigment epithelium-derived factor antibody; Blue=isotype control, Green= Pigment epithelium-derived factor antibody.

Description

SERPINF1 is a member of the serpin family. Serpins are a group of serine protease inhibitors, some of which have also been reported to exhibit neurotrophic activity.

Application Notes

The stated application concentrations are suggested starting points. Titration of the Pigment epithelium-derived factor antibody may be required due to differences in protocols and secondary/substrate sensitivity.

Immunogen

A portion of amino acids 9-36 from the human protein was used as the immunogen for the Pigment epithelium-derived factor antibody.

Storage

Aliquot the Pigment epithelium-derived factor antibody and store frozen at -20oC or colder. Avoid repeated freeze-thaw cycles.

