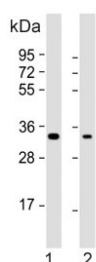


## PI15 Antibody / Peptidase inhibitor 15 (F54668)

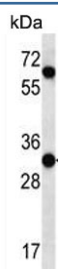
Catalog No.	Formulation	Size
F54668-0.4ML	In 1X PBS, pH 7.4, with 0.09% sodium azide	0.4 ml
F54668-0.08ML	In 1X PBS, pH 7.4, with 0.09% sodium azide	0.08 ml

**Bulk quote request**

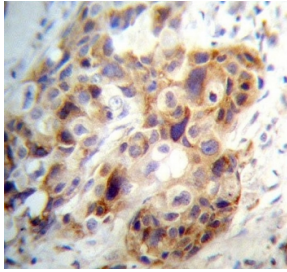
<b>Availability</b>	1-3 business days
<b>Species Reactivity</b>	Human
<b>Format</b>	Purified
<b>Clonality</b>	Polyclonal (rabbit origin)
<b>Isotype</b>	Rabbit Ig
<b>Purity</b>	Antigen affinity purified
<b>UniProt</b>	O43692
<b>Applications</b>	Flow Cytometry : 1:25 (1x10 <sup>6</sup> cells) Immunohistochemistry (FFPE) : 1:25 Western Blot : 1:500-1:2000
<b>Limitations</b>	This PI15 antibody is available for research use only.



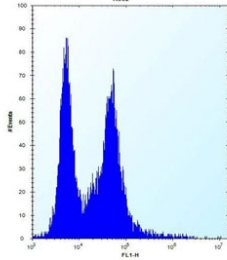
Western blot testing of human 1) HeLa and 2) PC-3 cell lysate with PI15 antibody. Predicted molecular weight ~29 kDa.



Western blot testing of human K562 cell lysate with PI15 antibody. Predicted molecular weight ~29 kDa.



IHC testing of FFPE human breast carcinoma tissue with PI15 antibody. HIER: steam section in pH6 citrate buffer for 20 min and allow to cool prior to staining.



Flow cytometry testing of human K562 cells with PI15 antibody; Left=isotype control, Right= PI15 antibody.

## Description

This gene encodes a trypsin inhibitor. The protein shares similarity to insect venom allergens, mammalian testis-specific proteins and plant pathogenesis-related proteins. It is frequently expressed in human neuroblastoma and glioblastoma cell lines, and thus may play a role in the central nervous system. [RefSeq].

## Application Notes

The stated application concentrations are suggested starting points. Titration of the PI15 antibody may be required due to differences in protocols and secondary/substrate sensitivity.

## Immunogen

A portion of amino acids 34-63 from the human protein was used as the immunogen for the PI15 antibody.

## Storage

Aliquot the PI15 antibody and store frozen at -20oC or colder. Avoid repeated freeze-thaw cycles.