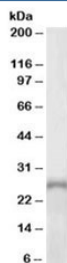


## PHOX2A Antibody (R34439)

Catalog No.	Formulation	Size
R34439-100UG	0.5 mg/ml in 1X TBS, pH7.3, with 0.5% BSA (US sourced) and 0.02% sodium azide	100 ug

[Bulk quote request](#)

Availability	1-3 business days
Species Reactivity	Human
Predicted Reactivity	Cow, Dog, Pig
Format	Antigen affinity purified
Host	Goat
Clonality	Polyclonal (goat origin)
Isotype	Goat Ig
Purity	Antigen affinity
Gene ID	401
Applications	Western Blot : 1-3ug/ml ELISA (peptide) LOD : 1:32000
Limitations	This PHOX2A antibody is available for research use only.



Western blot testing of human adrenal gland lysate with PHOX2A antibody at 1ug/ml.  
Predicted molecular weight: ~30kDa.

### Description

Additional name(s) for this target protein: Paired-like homeobox 2a, ARIX, CFEOM2, FEOM2, NCAM2

### Application Notes

Optimal dilution of the PHOX2A antibody should be determined by the researcher.

## **Immunogen**

Amino acids KGEARCSSEDDDSKE were used as the immunogen for this PHOX2A antibody.

## **Storage**

Aliquot and store the PHOX2A antibody at -20oC.