

Phosphotyrosine Antibody [clone PY20] (V2359)

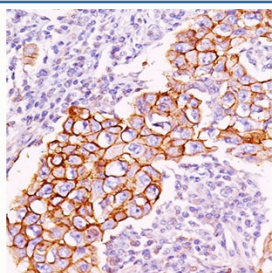
Catalog No.	Formulation	Size
V2359-100UG	0.2 mg/ml in 1X PBS with 0.1 mg/ml BSA (US sourced) and 0.05% sodium azide	100 ug
V2359-20UG	0.2 mg/ml in 1X PBS with 0.1 mg/ml BSA (US sourced) and 0.05% sodium azide	20 ug
V2359SAF-100UG	1 mg/ml in 1X PBS; BSA free, sodium azide free	100 ug



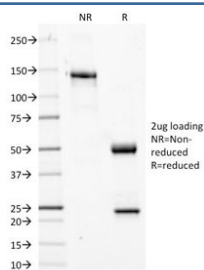
Citations (12)

[Bulk quote request](#)

Species Reactivity	NA
Format	Purified
Host	Mouse
Clonality	Monoclonal (mouse origin)
Isotype	Mouse IgG2b
Clone Name	PY20
Purity	Protein G affinity chromatography
Buffer	1X PBS, pH 7.4
Gene ID	Not Applicable
Localization	Depends on phosphorylated target localization
Applications	Flow Cytometry : 0.5-1ug/10 ⁶ cells Immunofluorescence : 1-2ug/ml Western Blot : 0.5-1ug/ml Immunoprecipitation : 1-2ug/500ug protein lysate Immunohistochemistry (FFPE) : 1-2ug/ml for 30 min at RT
Limitations	This Phosphotyrosine antibody is available for research use only.



IHC staining of breast carcinoma with phosphotyrosine antibody (PY20). Note cell surface and cytoplasmic staining.



SDS-PAGE Analysis of Purified, BSA-Free Phosphotyrosine Antibody (clone PY20).
Confirmation of Integrity and Purity of the Antibody.

Description

Protein phosphorylation is a fundamental event in the regulation of a large number of intracellular processes. Phosphorylation of specific tyrosine residues is the result of activation or stimulation of their respective protein tyrosine kinases. The phosphorylated proteins can be auto-phosphorylated kinases or certain cellular protein substrates. Tyrosine-phosphorylated proteins are involved in signal transduction and in the regulation of cell proliferation. Antibody to phosphotyrosine provides an excellent tool for the detection, characterization, and purification of phosphotyrosine containing proteins. This antibody shows no cross-reaction with other phosphoamino acids and is superb for multiple applications including staining of formalin/paraffin tissues.

Application Notes

The concentration stated for each application is a general starting point. Variations in protocols, secondaries and substrates may require the Phosphotyrosine antibody to be titrated up or down for optimal performance.

1. No pretreatment is required for staining of formalin-fixed, paraffin-embedded tissues.

Immunogen

Phosphotyrosine conjugated to KLH was used as the immunogen for this antibody.

Storage

Store the Phosphotyrosine antibody at 2-8°C (with azide) or aliquot and store at -20°C or colder (without azide).

Alternate Names

P-Tyr

References (1)