

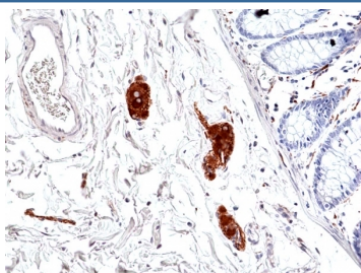
Phosphorylated Tau antibody (pSer396) [clone RM461] (R20474)

Catalog No.	Formulation	Size
R20474-0.1ML	Antibody in PBS with 50% glycerol, 1% BSA and 0.09% sodium azide	100 ul

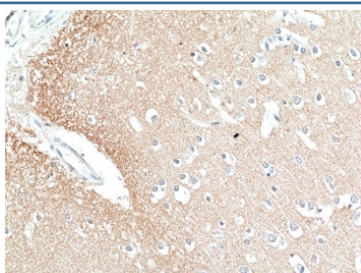
Recombinant **RABBIT MONOCLONAL**

Bulk quote request

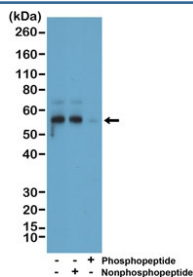
Availability	1-3 business days
Species Reactivity	Human, Mouse
Format	Purified
Clonality	Recombinant Rabbit Monoclonal
Isotype	Rabbit IgG
Clone Name	RM461
Purity	Protein A purified from animal origin-free supernatant
UniProt	P10636
Applications	Immunohistochemistry (FFPE) : 1:50-1:100 Western Blot : 1:1000-1:2000.
Limitations	This recombinant Phosphorylated Tau antibody is available for research use only.



IHC staining of FFPE human colon tissue with recombinant Phosphorylated Tau antibody at 1:50.



IHC staining of FFPE human brain tissue with recombinant Phosphorylated Tau antibody at 1:50.



Western blot of mouse brain tissue lysate using recombinant Phosphorylated Tau antibody at a 1:1000 dilution. The phospho-specificity of the antibody was verified by peptide blocking using a phosphopeptide or non-phosphopeptide targeting residue Ser396.

Description

This antibody reacts to Tau only when phosphorylated at Ser396.

Application Notes

The stated application concentrations are suggested starting points. Titration of the recombinant Phosphorylated Tau antibody may be required due to differences in protocols and secondary/substrate sensitivity.

Immunogen

A phospho-peptide corresponding to human Tau (Ser396) was used as the immunogen for the recombinant Phosphorylated Tau antibody.

Storage

Store the recombinant Phosphorylated Tau antibody at -20oC.