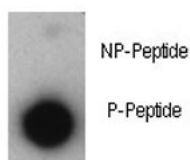


Phosphorylated-p21 Antibody (pT57) (F48425)

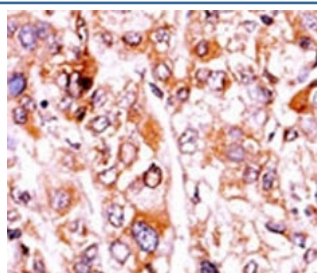
Catalog No.	Formulation	Size
F48425-0.4ML	In 1X PBS, pH 7.4, with 0.09% sodium azide	0.4 ml
F48425-0.08ML	In 1X PBS, pH 7.4, with 0.09% sodium azide	0.08 ml

[Bulk quote request](#)

Availability	1-3 business days
Species Reactivity	Human
Format	Antigen affinity purified
Host	Rabbit
Clonality	Polyclonal (rabbit origin)
Isotype	Rabbit Ig
Purity	Antigen affinity
UniProt	P38936
Applications	Dot Blot : 1:500 IHC (Paraffin) : 1:50-1:100
Limitations	This phosphorylated-p21 antibody is available for research use only.



Dot blot analysis of phosphorylated-p21 antibody. 50ng of phos-peptide or nonphos-peptide per dot were spotted.



IHC analysis of FFPE human hepatocarcinoma tissue stained with the phosphorylated-p21 antibody.

Description

This gene encodes a potent cyclin-dependent kinase inhibitor. The encoded protein binds to and inhibits the activity of cyclin-CDK2 or -CDK4 complexes, and thus functions as a regulator of cell cycle progression at G1. The expression of this gene is tightly controlled by the tumor suppressor protein p53, through which this protein mediates the p53-dependent cell cycle G1 phase arrest in response to a variety of stress stimuli. This protein can interact with proliferating cell nuclear antigen (PCNA), a DNA polymerase accessory factor, and plays a regulatory role in S phase DNA replication and DNA damage repair. This protein was reported to be specifically cleaved by CASP3-like caspases, which thus leads to a dramatic activation of CDK2, and may be instrumental in the execution of apoptosis following caspase activation. Two alternatively spliced variants, which encode an identical protein, have been reported.

Application Notes

Titration of the phosphorylated-p21 antibody may be required due to differences in protocols and secondary/substrate sensitivity.

Immunogen

This phosphorylated-p21 antibody was produced from rabbits immunized with a KLH conjugated synthetic phosphopeptide corresponding to amino acid residues surrounding pT57 of human P21CIP1.

Storage

Aliquot the phosphorylated-p21 antibody and store frozen at -20oC or colder. Avoid repeated freeze-thaw cycles.