

## Phospholipase C-L2 Antibody / PLCL2 (F54629)

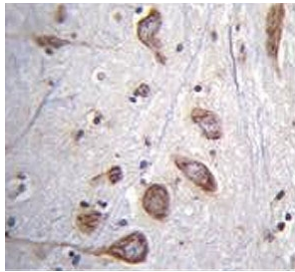
Catalog No.	Formulation	Size
F54629-0.4ML	In 1X PBS, pH 7.4, with 0.09% sodium azide	0.4 ml
F54629-0.08ML	In 1X PBS, pH 7.4, with 0.09% sodium azide	0.08 ml

[Bulk quote request](#)

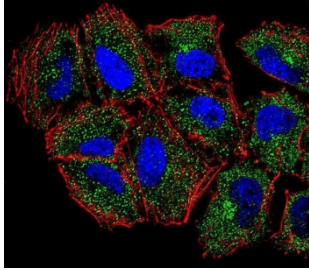
<b>Availability</b>	1-3 business days
<b>Species Reactivity</b>	Human
<b>Format</b>	Purified
<b>Host</b>	Rabbit
<b>Clonality</b>	Polyclonal (rabbit origin)
<b>Isotype</b>	Rabbit Ig
<b>Purity</b>	Antigen affinity purified
<b>UniProt</b>	Q9UPR0
<b>Localization</b>	Cytoplasmic
<b>Applications</b>	Flow Cytometry : 1:10-1:50 (1x10e6 cells) Immunofluorescence : 1:10-1:50 Immunohistochemistry (FFPE) : 1:10-1:50 Western Blot : 1:500-1:1000
<b>Limitations</b>	This Phospholipase C-L2 antibody is available for research use only.

kDa  
250  
130  
95  
72  
55

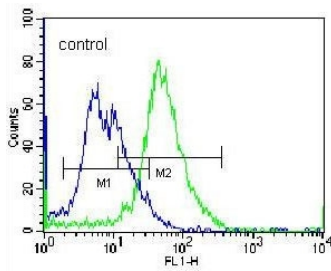
Western blot testing of human NCI-H460 cell lysate with Phospholipase C-L2 antibody.  
Predicted molecular weight ~126 kDa.



IHC testing of FFPE human brain tissue with Phospholipase C-L2 antibody. HIER: steam section in pH6 citrate buffer for 20 min and allow to cool prior to staining.



Immunofluorescent staining of human NCI-H460 cells with Phospholipase C-L2 antibody (green), DAPI nuclear stain (blue) and anti-Actin (red).



Flow cytometry testing of human NCI-H460 cells with Phospholipase C-L2 antibody; Blue=isotype control, Green= Phospholipase C-L2 antibody.

## Description

PLCL2 may play an role in the regulation of Ins(1,4,5)P3 around the endoplasmic reticulum [UniProt].

## Application Notes

The stated application concentrations are suggested starting points. Titration of the Phospholipase C-L2 antibody may be required due to differences in protocols and secondary/substrate sensitivity.

## Immunogen

A portion of amino acids 1099-1126 from the human protein was used as the immunogen for the Phospholipase C-L2 antibody.

## Storage

Aliquot the Phospholipase C-L2 antibody and store frozen at -20oC or colder. Avoid repeated freeze-thaw cycles.