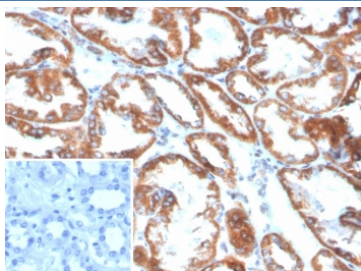


Phospholipase A2 Receptor 1 Antibody / PLA2R1 [clone PLA2R1/4898] (V5701)

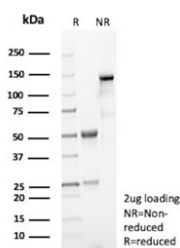
Catalog No.	Formulation	Size
V5701-100UG	0.2 mg/ml in 1X PBS with 0.1 mg/ml BSA (US sourced), 0.05% sodium azide	100 ug
V5701-20UG	0.2 mg/ml in 1X PBS with 0.1 mg/ml BSA (US sourced), 0.05% sodium azide	20 ug
V5701SAF-100UG	1 mg/ml in 1X PBS; BSA free, sodium azide free	100 ug

[Bulk quote request](#)

Availability	1-3 business days
Species Reactivity	Human
Format	Purified
Host	Mouse
Clonality	Monoclonal (mouse origin)
Isotype	Mouse IgG1, kappa
Clone Name	PLA2R1/4898
Purity	Protein G affinity
UniProt	Q13018
Localization	Cell membrane, Secreted
Applications	Immunohistochemistry (FFPE) : 1-2ug/ml
Limitations	This Phospholipase A2 Receptor 1 antibody is available for research use only.



IHC staining of FFPE human kidney tissue with Phospholipase A2 Receptor 1 antibody (clone PLA2R1/4898). Inset: PBS used in place of primary Ab (secondary Ab negative control). HIER: boil tissue sections in pH 9 10mM Tris with 1mM EDTA for 20 min and allow to cool before testing.



SDS-PAGE analysis of purified, BSA-free Phospholipase A2 Receptor 1 antibody (clone PLA2R1/4898) as confirmation of integrity and purity.

Description

This gene represents a phospholipase A2 receptor. The encoded protein likely exists as both a transmembrane form and a soluble form. The transmembrane receptor may play a role in clearance of phospholipase A2, thereby inhibiting its action. Receptor for secretory phospholipase A2 (sPLA2). Acts as a receptor for phospholipase sPLA2-IB (PLA2G1B) but not sPLA2-IIA (PLA2G2A).

Application Notes

Optimal dilution of the Phospholipase A2 Receptor 1 antibody should be determined by the researcher.

Immunogen

A portion of amino acids 300-600 from human PLA2R1 protein was used as the immunogen for the Phospholipase A2 Receptor 1 antibody.

Storage

Aliquot the Phospholipase A2 Receptor 1 antibody and store frozen at -20°C or colder. Avoid repeated freeze-thaw cycles.