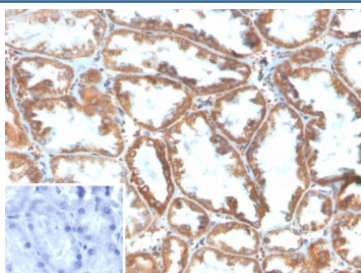


## Phospholipase A2 Receptor 1 Antibody / PLA2R1 [clone PLA2R1/4897] (V5700)

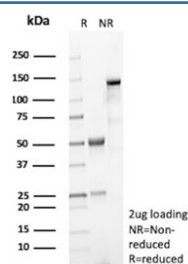
Catalog No.	Formulation	Size
V5700-100UG	0.2 mg/ml in 1X PBS with 0.1 mg/ml BSA (US sourced), 0.05% sodium azide	100 ug
V5700-20UG	0.2 mg/ml in 1X PBS with 0.1 mg/ml BSA (US sourced), 0.05% sodium azide	20 ug
V5700SAF-100UG	1 mg/ml in 1X PBS; BSA free, sodium azide free	100 ug

[Bulk quote request](#)

<b>Availability</b>	1-3 business days
<b>Species Reactivity</b>	Human
<b>Format</b>	Purified
<b>Host</b>	Mouse
<b>Clonality</b>	Monoclonal (mouse origin)
<b>Isotype</b>	Mouse IgG1, kappa
<b>Clone Name</b>	PLA2R1/4897
<b>Purity</b>	Protein G affinity
<b>UniProt</b>	Q13018
<b>Localization</b>	Cell membrane, Secreted
<b>Applications</b>	Immunohistochemistry (FFPE) : 1-2ug/ml
<b>Limitations</b>	This Phospholipase A2 Receptor 1 antibody is available for research use only.



IHC staining of FFPE human kidney tissue with Phospholipase A2 Receptor 1 antibody (clone PLA2R1/4897). Inset: PBS used in place of primary Ab (secondary Ab negative control). HIER: boil tissue sections in pH 9 10mM Tris with 1mM EDTA for 20 min and allow to cool before testing.



SDS-PAGE analysis of purified, BSA-free Phospholipase A2 Receptor 1 antibody (clone PLA2R1/4897) as confirmation of integrity and purity.

## Description

Phospholipase A2 Receptor 1 may play a role in clearance of phospholipase A2, thereby inhibiting its action.

## Application Notes

Optimal dilution of the Phospholipase A2 Receptor 1 antibody should be determined by the researcher.

## Immunogen

A portion of amino acids 300-600 from human PLA2R1 protein was used as the immunogen for the Phospholipase A2 Receptor 1 antibody.

## Storage

Aliquot the Phospholipase A2 Receptor 1 antibody and store frozen at -20oC or colder. Avoid repeated freeze-thaw cycles.