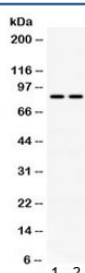


## Phospholipase A2 Antibody / PLA2G4A / cPLA2 (R32107)

Catalog No.	Formulation	Size
R32107	0.5mg/ml if reconstituted with 0.2ml sterile DI water	100 ug

**Bulk quote request**

<b>Availability</b>	1-3 business days
<b>Species Reactivity</b>	Human, Mouse
<b>Format</b>	Antigen affinity purified
<b>Clonality</b>	Polyclonal (rabbit origin)
<b>Isotype</b>	Rabbit IgG
<b>Purity</b>	Antigen affinity
<b>Buffer</b>	Lyophilized from 1X PBS with 2.5% BSA and 0.025% sodium azide
<b>UniProt</b>	P47712
<b>Applications</b>	Western Blot : 0.1-0.5ug/ml
<b>Limitations</b>	This Phospholipase A2 antibody is available for research use only.



Western blot testing of 1) human HeLa and 2) mouse NIH3T3 cell lysate with Phospholipase A2 antibody. Expected/observed molecular weight ~85 kDa.

## Description

Phospholipase A2, Group IVA, is an enzyme that in humans is encoded by the PLA2G4A gene. Tay et al. (1995) mapped the PLA2G4A gene to rat chromosome 13 by PCR-based intercross genotyping and to human 1q25 by fluorescence in situ hybridization. By site-directed mutagenesis and biochemical analysis of the recombinant protein, Sharp et al. (1994) determined that ser228 participates in the catalytic mechanism of cPLA2 and that both the phospholipase A2 and the lysophospholipase activities are catalyzed by the same active site residue(s). PLA2G4A, the cytosolic phospholipase A2, appears to subserve transmembrane signaling responses to extracellular ligands (Skorecki, 1995).

## Application Notes

Optimal dilution of the Phospholipase A2 antibody should be determined by the researcher.

## Immunogen

Amino acids NFQYPNQAFKRLHDLMHFNTLNNIDVIKEAMVESIEYRRQ of human PLA2G4A were used as the immunogen for the Phospholipase A2 antibody.

## Storage

After reconstitution, the Phospholipase A2 antibody can be stored for up to one month at 4°C. For long-term, aliquot and store at -20°C. Avoid repeated freezing and thawing.