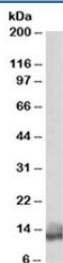


## Phospholamban Antibody (R34687)

Catalog No.	Formulation	Size
R34687-100UG	0.5 mg/ml in 1X TBS, pH7.3, with 0.5% BSA (US sourced) and 0.02% sodium azide	100 ug

[Bulk quote request](#)

Availability	1-3 business days
Species Reactivity	Human, Rat
Predicted Reactivity	Cow, Pig
Format	Antigen affinity purified
Host	Goat
Clonality	Polyclonal (goat origin)
Isotype	Goat Ig
Purity	Antigen affinity
Gene ID	5350
Applications	Western Blot : 0.01-0.03ug/ml ELISA (peptide) LOD : 1:8000
Limitations	This Phospholamban antibody is available for research use only.



Western blot testing of human heart lysate with Phospholamban antibody at 0.03ug/ml.  
Predicted molecular weight: 6/12/18/24kDa (monomer/dimer/oligomers).

## Description

Additional name(s) for this target protein: CMD1P, PLB; PLN

## Application Notes

Optimal dilution of the Phospholamban antibody should be determined by the researcher.

## Immunogen

Amino acids KVQYLTRSAIRR were used as the immunogen for this Phospholamban antibody.

## Storage

Aliquot and store the Phospholamban antibody at -20oC.