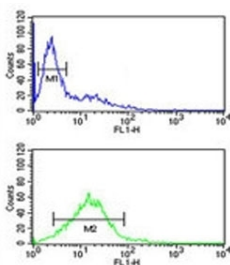


## Phospholamban Antibody (F51974)

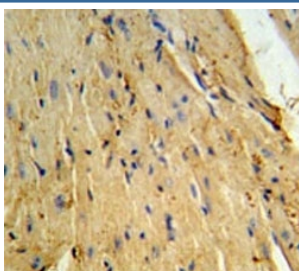
Catalog No.	Formulation	Size
F51974-0.4ML	In 1X PBS, pH 7.4, with 0.09% sodium azide	0.4 ml
F51974-0.08ML	In 1X PBS, pH 7.4, with 0.09% sodium azide	0.08 ml

**Bulk quote request**

<b>Availability</b>	1-3 business days
<b>Species Reactivity</b>	Human
<b>Format</b>	Antigen affinity purified
<b>Clonality</b>	Polyclonal (rabbit origin)
<b>Isotype</b>	Rabbit Ig
<b>Purity</b>	Antigen affinity
<b>UniProt</b>	P26678
<b>Applications</b>	Western Blot : 1:1000 IHC (Paraffin) : 1:50-1:100 Flow Cytometry : 1:10-1:50
<b>Limitations</b>	This Phospholamban antibody is available for research use only.



Phospholamban antibody flow cytometric analysis of Jurkat cells (green) compared to a [negative control](http://search_result.php?search_txt=n1001) (blue). FITC-conjugated goat-anti-rabbit secondary Ab was used for the analysis.



Phospholamban antibody IHC analysis in formalin fixed and paraffin embedded mouse heart tissue.



Western blot analysis of PLB / Phospholamban antibody and Jurkat lysate. Predicted molecular weight: 6/12/18/24kDa (monomer/dimer/oligomers).

## Description

PLB is a 52 amino acid phosphoprotein which regulates the calcium pump of cardiac sarcoplasmic reticulum (SR). PLB is an oligomer of five identical subunits each having a cytoplasmic and transmembrane domain. The cytoplasmic domain (residues 1 to 25) contains the phosphorylation sites and is highly basic and readily cleaved by proteases; whereas the transmembrane domain (residues 25 to 52) is mostly hydrophobic, protease resistant and stabilizes the pentamer.

## Application Notes

Titration of the Phospholamban antibody may be required due to differences in protocols and secondary/substrate sensitivity.

## Immunogen

A portion of amino acids 1-30 from the human protein was used as the immunogen for the Phospholamban antibody.

## Storage

Aliquot the Phospholamban antibody and store frozen at -20°C or colder. Avoid repeated freeze-thaw cycles.