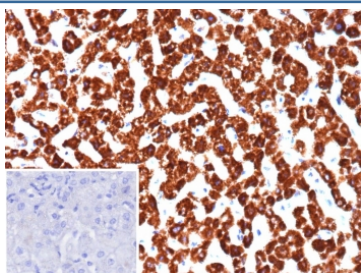


## Phosphohistidine phosphatase 1 Antibody / PHPT1 [clone PHPT1/12054] (V5722)

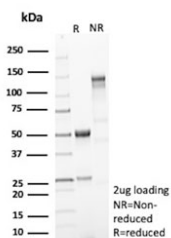
Catalog No.	Formulation	Size
V5722-100UG	0.2 mg/ml in 1X PBS with 0.1 mg/ml BSA (US sourced), 0.05% sodium azide	100 ug
V5722-20UG	0.2 mg/ml in 1X PBS with 0.1 mg/ml BSA (US sourced), 0.05% sodium azide	20 ug
V5722SAF-100UG	1 mg/ml in 1X PBS; BSA free, sodium azide free	100 ug

[Bulk quote request](#)

<b>Availability</b>	1-3 business days
<b>Species Reactivity</b>	Human
<b>Format</b>	Purified
<b>Clonality</b>	Monoclonal (mouse origin)
<b>Isotype</b>	Mouse IgG
<b>Clone Name</b>	PHPT1/12054
<b>Purity</b>	Protein A/G affinity
<b>UniProt</b>	Q9NRX4
<b>Localization</b>	Cytoplasm
<b>Applications</b>	Immunohistochemistry (FFPE) : 1-2ug/ml
<b>Limitations</b>	This Phosphohistidine phosphatase 1 antibody is available for research use only.



IHC staining of FFPE human hepatocellular carcinoma tissue with Phosphohistidine phosphatase 1 antibody (clone PHPT1/12054). Inset: PBS used in place of primary Ab (secondary Ab negative control). HIER: boil tissue sections in pH 9 10mM Tris with 1mM EDTA for 20 min and allow to cool before testing.



SDS-PAGE analysis of purified, BSA-free Phosphohistidine phosphatase 1 antibody (clone PHPT1/12054) as confirmation of integrity and purity.

## Description

PHPT1 (phosphohistidine phosphatase 1), also known as 14 kDa phosphohistidine phosphatase, is a 125 amino acid enzyme belonging to the Janus protein family. Existing as a monomer in the cytoplasm, PHPT1 is an EDTAinsensitive phosphohistidine phosphatase. First identified in human adrenal gland, PHPT1 is highly expressed in skeletal muscle and heart, with lower expression in liver, pancreas and kidney. Overexpression of PHPT1 leads to specific phosphohistidine phosphatase activity towards phosphopeptide I, with no activity detected towards phosphotyrosine, phosphothreonine and phosphoserine peptides. PHPT1 is highly conserved among species, suggesting that it serves an essential functional role.

## Application Notes

Optimal dilution of the Phosphohistidine phosphatase 1 antibody should be determined by the researcher.

## Immunogen

A recombinant human 14 kDa phosphohistidine phosphatase protein was used as the immunogen for the Phosphohistidine phosphatase 1 antibody.

## Storage

Aliquot the Phosphohistidine phosphatase 1 antibody and store frozen at -20oC or colder. Avoid repeated freeze-thaw cycles.