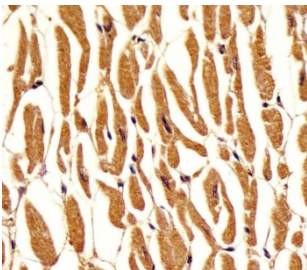


Phosphoglucomutase 1 Antibody / PGM1 (F54400)

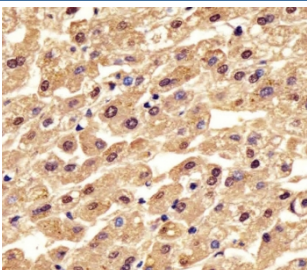
Catalog No.	Formulation	Size
F54400-0.4ML	In 1X PBS, pH 7.4, with 0.09% sodium azide	0.4 ml
F54400-0.08ML	In 1X PBS, pH 7.4, with 0.09% sodium azide	0.08 ml

[Bulk quote request](#)

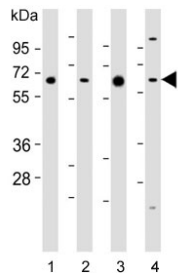
Availability	1-3 business days
Species Reactivity	Human, Mouse
Format	Purified
Host	Rabbit
Clonality	Polyclonal (rabbit origin)
Isotype	Rabbit Ig
Purity	Antigen affinity purified
UniProt	P36871
Localization	Nuclear, cytoplasmic
Applications	Western Blot : 1:500-1:2000 Immunohistochemistry (FFPE) : 1:25
Limitations	This Phosphoglucomutase 1 antibody is available for research use only.



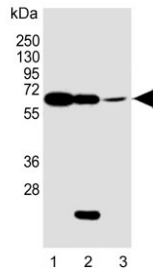
IHC testing of FFPE human heart tissue with Phosphoglucomutase 1 antibody. HIER: steam section in pH6 citrate buffer for 20 min and allow to cool prior to staining.



IHC testing of FFPE human liver tissue with Phosphoglucomutase 1 antibody. HIER: steam section in pH6 citrate buffer for 20 min and allow to cool prior to staining.



Western blot testing of 1) mouse heart, 2) human Jurkat, 3) human liver and 4) mouse testis lysate with Phosphoglucomutase 1 antibody. Predicted molecular weight: 61 kDa.



Western blot testing of 1) human liver, 2) mouse heart and 3) human Jurkat lysate with Phosphoglucomutase 1 antibody. Predicted molecular weight: 61 kDa.

Description

This enzyme participates in both the breakdown and synthesis of glucose. [UniProt]

Application Notes

The stated application concentrations are suggested starting points. Titration of the PGM1 antibody may be required due to differences in protocols and secondary/substrate sensitivity.

Immunogen

A portion of amino acids 469-501 from the human protein was used as the immunogen for the Phosphoglucomutase 1 antibody.

Storage

Aliquot the Phosphoglucomutase 1 antibody and store frozen at -20oC or colder. Avoid repeated freeze-thaw cycles.