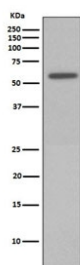


## Phospho-Vimentin Antibody (pS72) [clone ADE-22] (RQ5249)

| Catalog No. | Formulation  | Size   |
|-------------|--|--------|
| RQ5249      | Antibody in PBS with 0.02% sodium azide, 50% glycerol and 0.4-0.5mg/ml BSA | 100 ul |

[Bulk quote request](#)

|                    |   |
|--------------------|---|
| Availability       | 1-2 weeks   |
| Species Reactivity | Human   |
| Format             | Purified  |
| Host               | Rabbit  |
| Clonality          | Rabbit Monoclonal   |
| Isotype            | Rabbit IgG  |
| Clone Name         | ADE-22  |
| Purity             | Affinity purified   |
| UniProt            | P08670  |
| Applications       | Western Blot : 1:500-1:2000   |
| Limitations        | This phospho-Vimentin antibody (pS72) is available for research use only. |



Western blot testing of lysate from Calyculin A-treated HeLa cells with phospho-Vimentin antibody (pS72). Expected molecular weight: 53-58 kDa.

## Description

The VIM gene encodes a type III intermediate filament protein. Intermediate filaments, along with microtubules and actin microfilaments, make up the cytoskeleton. The encoded protein is responsible for maintaining cell shape and integrity of the cytoplasm, and stabilizing cytoskeletal interactions. This protein is involved in neuritogenesis and cholesterol transport and functions as an organizer of a number of other critical proteins involved in cell attachment, migration, and signaling. [RefSeq]

## Application Notes

Optimal dilution of the phospho-Vimentin antibody (pS72) should be determined by the researcher.

## Immunogen

A synthetic peptide specific to human Vimentin (surrounding phosphorylated serine 72) was used as the immunogen for the phospho-Vimentin antibody.

## Storage

Store the phospho-Vimentin antibody (pS72) at -20oC.