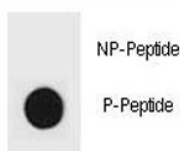


## Phospho-TSC2 Antibody (pS1096) (F48833)

Catalog No.	Formulation	Size
F48833-0.4ML	In 1X PBS, pH 7.4, with 0.09% sodium azide	0.4 ml
F48833-0.08ML	In 1X PBS, pH 7.4, with 0.09% sodium azide	0.08 ml

[Bulk quote request](#)

<b>Availability</b>	1-3 business days
<b>Species Reactivity</b>	Human
<b>Format</b>	Antigen affinity purified
<b>Host</b>	Rabbit
<b>Clonality</b>	Polyclonal (rabbit origin)
<b>Isotype</b>	Rabbit Ig
<b>Purity</b>	Antigen affinity
<b>UniProt</b>	P49815
<b>Applications</b>	Dot Blot : 1:500
<b>Limitations</b>	This phospho-TSC2 antibody is available for research use only.



Dot blot analysis of phospho-TSC2 antibody. 50ng of phos-peptide or nonphos-peptide per dot were spotted.

## Description

Mutations in this gene lead to tuberous sclerosis complex. Its gene product is believed to be a tumor suppressor and is able to stimulate specific GTPases. The protein associates with hamartin in a cytosolic complex, possibly acting as a chaperone for hamartin. Alternative splicing results in multiple transcript variants encoding different isoforms.

## Application Notes

Titration of the phospho-TSC2 antibody may be required due to differences in protocols and secondary/substrate sensitivity.

## Immunogen

This phospho-TSC2 antibody was produced from rabbits immunized with a KLH conjugated synthetic phosphopeptide corresponding to amino acid residues surrounding pS1096 of human TSC2.

## Storage

Aliquot the phospho-TSC2 antibody and store frozen at -20oC or colder. Avoid repeated freeze-thaw cycles.