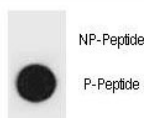


Phospho-TSC1 Antibody (pT416) (F48826)

Catalog No.	Formulation	Size
F48826-0.4ML	In 1X PBS, pH 7.4, with 0.09% sodium azide	0.4 ml
F48826-0.08ML	In 1X PBS, pH 7.4, with 0.09% sodium azide	0.08 ml

[Bulk quote request](#)

Availability	1-3 business days
Species Reactivity	Mouse
Format	Antigen affinity purified
Host	Rabbit
Clonality	Polyclonal (rabbit origin)
Isotype	Rabbit Ig
Purity	Antigen affinity
UniProt	Q9EP53
Applications	Dot Blot : 1:500
Limitations	This phospho-TSC1 antibody is available for research use only.



Dot blot analysis of phospho-TSC1 antibody. 50ng of phos-peptide or nonphos-peptide per dot were spotted.

Description

In complex with TSC2, inhibits the nutrient-mediated or growth factor-stimulated phosphorylation of S6K1 and EIF4EBP1 by negatively regulating mTORC1 signaling (By similarity). Implicated as a tumor suppressor. Involved in microtubule-mediated protein transport, but this seems to be due to unregulated mTOR signaling (By similarity).

Application Notes

Titration of the phospho-TSC1 antibody may be required due to differences in protocols and secondary/substrate sensitivity.

Immunogen

This phospho-TSC1 antibody was produced from rabbits immunized with a KLH conjugated synthetic phosphopeptide corresponding to amino acid residues surrounding pT416 of mouse TSC1.

Storage

Aliquot the phospho-TSC1 antibody and store frozen at -20oC or colder. Avoid repeated freeze-thaw cycles.