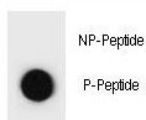


## Phospho-TSC1 Antibody (pS1080) (F48827)

Catalog No.	Formulation	Size
F48827-0.4ML	In 1X PBS, pH 7.4, with 0.09% sodium azide	0.4 ml
F48827-0.08ML	In 1X PBS, pH 7.4, with 0.09% sodium azide	0.08 ml

[Bulk quote request](#)

<b>Availability</b>	1-3 business days
<b>Species Reactivity</b>	Human
<b>Predicted Reactivity</b>	Mouse, Rat
<b>Format</b>	Antigen affinity purified
<b>Host</b>	Rabbit
<b>Clonality</b>	Polyclonal (rabbit origin)
<b>Isotype</b>	Rabbit Ig
<b>Purity</b>	Antigen affinity
<b>UniProt</b>	Q92574
<b>Applications</b>	Dot Blot : 1:500
<b>Limitations</b>	This phospho-TSC1 antibody is available for research use only.



Dot blot analysis of phospho-TSC1 antibody. 50ng of phos-peptide or nonphos-peptide per dot were spotted.

## Description

This gene encodes a growth inhibitory protein thought to play a role in the stabilization of tuberlin. Mutations in this gene have been associated with tuberous sclerosis. Alternative splicing results in multiple transcript variants.

## Application Notes

Titration of the phospho-TSC1 antibody may be required due to differences in protocols and secondary/substrate

sensitivity.

## **Immunogen**

This phospho-TSC1 antibody was produced from rabbits immunized with a KLH conjugated synthetic phosphopeptide corresponding to amino acid residues surrounding pS1080 of human TSC1.

## **Storage**

Aliquot the phospho-TSC1 antibody and store frozen at -20oC or colder. Avoid repeated freeze-thaw cycles.