

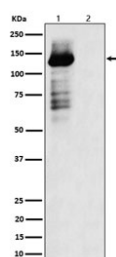
Phospho-TAOK1/2/3 Antibody / pS181/181/177 [clone 28T82] (RQ8563)

Catalog No.	Formulation	Size
RQ8563	Antibody in PBS with 0.02% sodium azide, 50% glycerol and 0.4-0.5mg/ml BSA	100 ug

Recombinant RABBIT MONOCLONAL

[Bulk quote request](#)

Availability	1-3 days
Species Reactivity	Human
Format	Purified
Host	Rabbit
Clonality	Recombinant Rabbit Monoclonal
Isotype	Rabbit IgG
Clone Name	28T82
Purity	Affinity chromatography
UniProt	Q7L7X3, Q9UL54, Q9H2K8
Applications	Western Blot : 1:500-1:2000
Limitations	This phospho-TAOK1/2/3 antibody is available for research use only.



Western blot testing of lysate from 1) human HEK293 cells and 2) human HEK293 cells treated with lambda phosphatase, using phospho-TAOK1/2/3 antibody.

Description

Serine/threonine-protein kinase involved in various processes such as p38/MAPK14 stress-activated MAPK cascade, DNA damage response and regulation of cytoskeleton stability. Phosphorylates MAP2K3, MAP2K6 and MARK2. Acts as an activator of the p38/MAPK14 stress-activated MAPK cascade by mediating phosphorylation and subsequent activation of the upstream MAP2K3 and MAP2K6 kinases. Involved in G-protein coupled receptor signaling to p38/MAPK14.

[UniProt]

Application Notes

Optimal dilution of the phospho-TAOK1/2/3 antibody should be determined by the researcher.

Immunogen

A synthetic peptide from the sequence surrounding phosphorylated serine 181/181/177 of human TAOK1/2/3 protein was used as the immunogen for the phospho-TAOK1/2/3 antibody.

Storage

Store the phospho-TAOK1/2/3 antibody at -20oC.