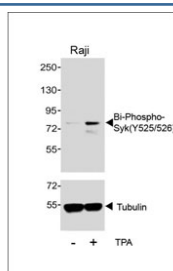


## Phospho-Syk Antibody (pY525/526) (F48459)

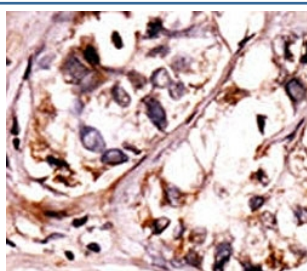
Catalog No.	Formulation	Size
F48459-0.2ML	In 1X PBS, pH 7.4, with 0.09% sodium azide	0.2 ml
F48459-0.05ML	In 1X PBS, pH 7.4, with 0.09% sodium azide	0.05 ml

**Bulk quote request**

<b>Availability</b>	1-3 business days
<b>Species Reactivity</b>	Human
<b>Format</b>	Antigen affinity purified
<b>Clonality</b>	Polyclonal (rabbit origin)
<b>Isotype</b>	Rabbit Ig
<b>Purity</b>	Antigen affinity
<b>UniProt</b>	P43405
<b>Applications</b>	Western Blot : 1:100-1:250 Immunohistochemistry (FFPE) : 1:50-1:100
<b>Limitations</b>	This phospho-Syk antibody is available for research use only.



Western blot testing of lysate from human Raji cells that was untreated (-) and treated with 200 nm TPA for 30 min (+).



IHC analysis of FFPE human hepatocarcinoma tissue stained with the phospho-Syk antibody.

## Description

Syk is a positive effector of BCR-stimulated responses. This protein couples the B-cell antigen receptor (BCR) to the mobilization of calcium ion either through a phosphoinositide 3-kinase-dependent pathway, when not phosphorylated on tyrosines of the linker region, or through a phospholipase C-gamma-dependent pathway, when phosphorylated on Tyr-342 and Tyr-346. Thus the differential phosphorylation of Syk can determine the pathway by which BCR is coupled to the regulation of intracellular calcium ion.

## Application Notes

Titration of the phospho-Syk antibody may be required due to differences in protocols and secondary/substrate sensitivity.

## Immunogen

This phospho-Syk antibody was produced from rabbits immunized with a KLH conjugated synthetic phosphopeptide corresponding to the amino acid residues surrounding pY525/526 of human Syk.

## Storage

Aliquot the phospho-Syk antibody and store frozen at -20oC or colder. Avoid repeated freeze-thaw cycles.