

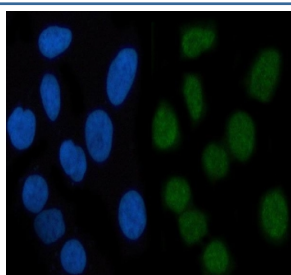
Phospho-STAT3 Antibody (pS727) [clone CAA-19] (RQ8665)

Catalog No.	Formulation	Size
RQ8665	Antibody in PBS with 0.02% sodium azide, 50% glycerol and 0.4-0.5mg/ml BSA	100 ul

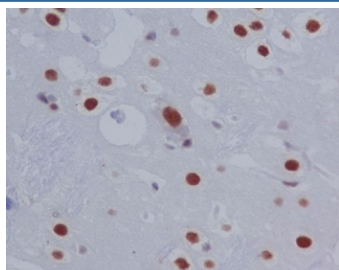
Recombinant **RABBIT MONOCLONAL**

[Bulk quote request](#)

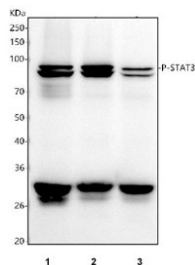
Availability	1-3 days
Species Reactivity	Human, Rat
Clonality	Recombinant Rabbit Monoclonal
Isotype	Rabbit IgG
Clone Name	CAA-19
Purity	Affinity purified
Applications	Western Blot : 1:500-1:2000 Immunohistochemistry (FFPE) : 1:50-1:200 Immunofluorescence : 1:50-1:200
Limitations	This Phospho-STAT3 antibody (pS727) antibody is available for research use only.



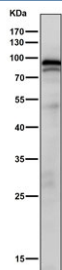
Immunofluorescent staining of FFPE human HeLa cells with Phospho-STAT3 antibody (green) and DAPI nuclear stain (blue). HIER: steam section in pH6 citrate buffer for 20 min.



IHC staining of FFPE rat brain tissue with Phospho-STAT3 antibody. HIER: boil tissue sections in pH8 EDTA for 20 min and allow to cool before testing.



Western blot testing of human 1) HEL, 2) A549 and 3) U-251 cell lysate with Phospho-STAT3 antibody.



Western blot testing of rat skin tissue lysate with Phospho-STAT3 antibody.

Description

Stat3 mediates the expression of a variety of genes in response to cell stimuli, and thus plays a key role in many cellular processes such as cell growth and apoptosis.

Application Notes

Optimal dilution of the Phospho-STAT3 antibody (pS727) antibody should be determined by the researcher.

Immunogen

A synthetic peptide specific to the region of human STAT3 protein surrounding phosphorylated serine 727 was used as the immunogen for the Phospho-STAT3 antibody (pS727).

Storage

Store the Phospho-STAT3 antibody at -20°C.