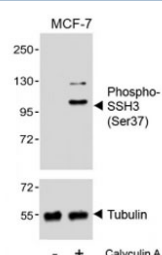


Phospho-SSH3 Antibody (Ser37) (F54123)

Catalog No.	Formulation	Size
F54123-0.2ML	In 1X PBS, pH 7.4, with 0.09% sodium azide	0.2 ml
F54123-0.05ML	In 1X PBS, pH 7.4, with 0.09% sodium azide	0.05 ml

[Bulk quote request](#)

Availability	1-3 business days
Species Reactivity	Human
Format	Antigen affinity purified
Host	Rabbit
Clonality	Polyclonal (rabbit origin)
Isotype	Rabbit Ig
Purity	Antigen affinity
UniProt	Q8TE77
Applications	Western Blot : 1:500
Limitations	This phospho-SSH3 antibody is available for research use only.



Western blot analysis of lysates from the human MCF7 cell line, untreated or treated with Calyculin A (100nM) using phospho-SSH3 antibody (upper) or Tubulin Ab (lower).

Description

Protein phosphatase which may play a role in the regulation of actin filament dynamics. Can dephosphorylate and activate the actin binding/depolymerizing factor cofilin, which subsequently binds to actin filaments and stimulates their disassembly (By similarity). [UniProt]

Application Notes

The stated application concentrations are suggested starting points. Titration of the phospho-SSH3 antibody may be required due to differences in protocols and secondary/substrate sensitivity.

Immunogen

A portion of amino acids 10-43 from human SSH3 was used as the immunogen for the phospho-SSH3 antibody.

Storage

Aliquot the phospho-SSH3 antibody and store frozen at -20oC or colder. Avoid repeated freeze-thaw cycles.