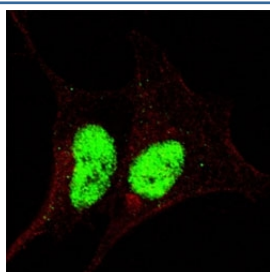


## Phospho-SOX2 Antibody (pS246) (F48650)

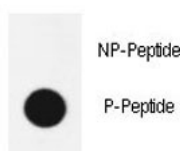
Catalog No.	Formulation	Size
F48650-0.4ML	In 1X PBS, pH 7.4, with 0.09% sodium azide	0.4 ml
F48650-0.08ML	In 1X PBS, pH 7.4, with 0.09% sodium azide	0.08 ml

[Bulk quote request](#)

<b>Availability</b>	1-3 business days
<b>Species Reactivity</b>	Human
<b>Predicted Reactivity</b>	Mouse
<b>Format</b>	Antigen affinity purified
<b>Host</b>	Rabbit
<b>Clonality</b>	Polyclonal (rabbit origin)
<b>Isotype</b>	Rabbit Ig
<b>Purity</b>	Antigen affinity
<b>UniProt</b>	P48431
<b>Applications</b>	Immunofluorescence : 1:200 Dot Blot : 1:500
<b>Limitations</b>	This phospho-SOX2 antibody is available for research use only.



Fluorescent confocal image of SY5Y cells stained with phospho-Sox2 antibody at 1:200. The immunosignal is localized to the nucleus.



Dot blot analysis of phospho-Sox2 antibody. 50ng of phos-peptide or nonphos-peptide per dot were spotted.

## Description

This intronless gene encodes a member of the SRY-related HMG-box (SOX) family of transcription factors involved in the regulation of embryonic development and in the determination of cell fate. The product of this gene is required for stem-cell maintenance in the central nervous system, and also regulates gene expression in the stomach. Mutations in this gene have been associated with optic nerve hypoplasia and with syndromic microphthalmia, a severe form of structural eye malformation. This gene lies within an intron of another gene called SOX2 overlapping transcript (SOX2OT).

## Application Notes

Titration of the phospho-SOX2 antibody may be required due to differences in protocols and secondary/substrate sensitivity.

## Immunogen

This phospho-SOX2 antibody was produced from rabbits immunized with a KLH conjugated synthetic phosphopeptide corresponding to amino acid residues surrounding pS246 of human SOX2.

## Storage

Aliquot the phospho-SOX2 antibody and store frozen at -20oC or colder. Avoid repeated freeze-thaw cycles.