

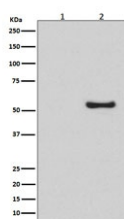
## Phospho-Smad1/5/9 Antibody (pS463/pS465/pS467) [clone HAF-19] (RQ8710)

Catalog No.	Formulation	Size
RQ8710	Antibody in PBS with 0.02% sodium azide, 50% glycerol and 0.4-0.5mg/ml BSA	100 ul

Recombinant **RABBIT MONOCLONAL**

[Bulk quote request](#)

Availability	1-3 days
Species Reactivity	Human
Clonality	Recombinant Rabbit Monoclonal
Isotype	Rabbit IgG
Clone Name	HAF-19
Applications	Western Blot : 1:500-1:2000
Limitations	This Phospho-Smad1/5/9 Antibody (pS463/pS465/pS467) is available for research use only.



Western blot testing of lysates from human HeLa cells, untreated (1) or BMP-4 treated (2), with Phospho-Smad1/5/9 antibody.

### Description

SMADs comprise a family of structurally similar proteins that are the main signal transducers for receptors of the transforming growth factor beta (TGF-B) superfamily, which are critically important for regulating cell development and growth. [Wiki]

### Application Notes

Optimal dilution of the Phospho-Smad1/5/9 antibody (pS463/pS465/pS467) should be determined by the researcher.

### Immunogen

A synthetic peptide specific to the region of human Smad1/5/9 protein surrounding phosphorylated serines 463/465/467 (respectively) was used as the immunogen for the Phospho-Smad1/5/9 antibody (pS463/pS465/pS467).

## Storage

Store the Phospho-Smad1/5/9 antibody at -20oC.