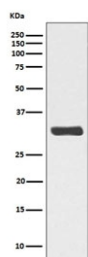


## Phospho-RPA32 Antibody (pT21) [clone FCG-18] (RQ5458)

Catalog No.	Formulation	Size
RQ5458	Antibody in PBS with 0.02% sodium azide, 50% glycerol and 0.4-0.5mg/ml BSA	100 ul

[Bulk quote request](#)

Availability	1-2 weeks
Species Reactivity	Human
Format	Purified
Clonality	Rabbit Monoclonal
Isotype	Rabbit IgG
Clone Name	FCG-18
Purity	Affinity purified
UniProt	P15927
Applications	Western Blot : 1:5000-1:10000
Limitations	This phospho-RPA32 antibody (pT21) is available for research use only.



Western blot testing of lysate from human HeLa cells treated with Calyculin A, with phospho-RPA32 antibody (pT21). Predicted molecular weight ~32 kDa.

## Description

The RPA2 gene encodes a subunit of the heterotrimeric Replication Protein A (RPA) complex, which binds to single-stranded DNA (ssDNA), forming a nucleoprotein complex that plays an important role in DNA metabolism, being involved in DNA replication, repair, recombination, telomere maintenance, and co-ordinating the cellular response to DNA damage through activation of the ataxia telangiectasia and Rad3-related protein (ATR) kinase. The RPA complex protects single-stranded DNA from nucleases, prevents formation of secondary structures that would interfere with repair, and co-ordinates the recruitment and departure of different genome maintenance factors. The heterotrimeric complex has two different modes of ssDNA binding, a low-affinity and high-affinity mode, determined by which

oligonucleotide/oligosaccharide-binding (OB) domains of the complex are utilized, and differing in the length of DNA bound. This subunit contains a single OB domain that participates in high-affinity DNA binding and also contains a winged helix domain at its carboxy terminus, which interacts with many genome maintenance proteins. Post-translational modifications of the RPA complex also play a role in co-ordinating different damage response pathways. [RefSeq]

## Application Notes

Optimal dilution of the phospho-RPA32 antibody (pT21) should be determined by the researcher.

## Immunogen

A synthetic peptide specific to human RPA32 (surrounding pT21) was used as the immunogen for the phospho-RPA32 antibody.

## Storage

Store the phospho-RPA32 antibody (pT21) at -20°C.