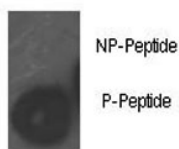


## Phospho-Rb Antibody (pS780) (F48445)

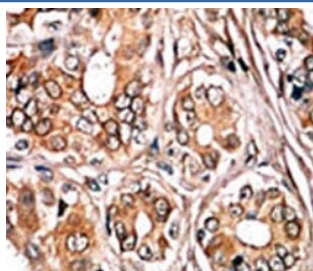
Catalog No.	Formulation	Size
F48445-0.4ML	In 1X PBS, pH 7.4, with 0.09% sodium azide	0.4 ml
F48445-0.08ML	In 1X PBS, pH 7.4, with 0.09% sodium azide	0.08 ml

**Bulk quote request**

<b>Availability</b>	1-3 business days
<b>Species Reactivity</b>	Human
<b>Predicted Reactivity</b>	Mouse, Rat
<b>Format</b>	Antigen affinity purified
<b>Clonality</b>	Polyclonal (rabbit origin)
<b>Isotype</b>	Rabbit Ig
<b>Purity</b>	Antigen affinity
<b>UniProt</b>	P06400
<b>Applications</b>	Dot Blot : 1:500 IHC (Paraffin) : 1:50-1:100
<b>Limitations</b>	This phospho-Rb antibody is available for research use only.



Dot blot analysis of phospho-Rb antibody. 50ng of phos-peptide or nonphos-peptide per dot were spotted.



IHC analysis of FFPE human breast carcinoma tissue stained with the phospho-Rb antibody.

## Description

RB1 likely acts as a regulator of other genes. It forms a complex with adenovirus E1A and with SV40 large T antigen, acts as a tumor suppressor, and may bind and modulate functionally certain cellular proteins with which T and E1A compete for pocket binding. RB1 is a potent inhibitor of E2F-mediated trans-activation, and also recruits and targets histone methyltransferase SUV39H1 leading to epigenetic transcriptional repression. This protein inhibits the intrinsic kinase activity of TAF1. Defects in RB1 are the cause of childhood cancer retinoblastoma (RB), a congenital malignant tumor that arises from the nuclear layers of the retina. Defects in RB1 are also a cause of bladder cancer and osteogenic sarcoma.

## Application Notes

Titration of the phospho-Rb antibody may be required due to differences in protocols and secondary/substrate sensitivity.

## Immunogen

This phospho-Rb antibody was produced from rabbits immunized with a KLH conjugated synthetic phosphopeptide corresponding to amino acid residues surrounding pS780 of human Rb.

## Storage

Aliquot the phospho-Rb antibody and store frozen at -20oC or colder. Avoid repeated freeze-thaw cycles.