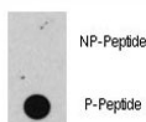


Phospho-Rb Antibody (pS608) (F48443)

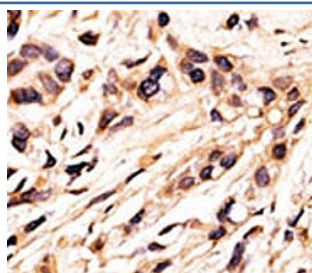
Catalog No.	Formulation	Size
F48443-0.4ML	In 1X PBS, pH 7.4, with 0.09% sodium azide	0.4 ml
F48443-0.08ML	In 1X PBS, pH 7.4, with 0.09% sodium azide	0.08 ml

[Bulk quote request](#)

Availability	1-3 business days
Species Reactivity	Human
Format	Antigen affinity purified
Host	Rabbit
Clonality	Polyclonal (rabbit origin)
Isotype	Rabbit Ig
Purity	Antigen affinity
UniProt	P06400
Applications	Dot Blot : 1:500 IHC (Paraffin) : 1:50-1:100
Limitations	This phospho-Rb antibody is available for research use only.



Dot blot analysis of phospho-Rb antibody. 50ng of phos-peptide or nonphos-peptide per dot were spotted.



IHC analysis of FFPE human breast carcinoma tissue stained with the phospho-Rb antibody.

Description

Retinoblastoma (RB) is an embryonic malignant neoplasm of retinal origin. It almost always presents in early childhood and is often bilateral. Spontaneous regression occurs in some cases.

Application Notes

Titration of the phospho-Rb antibody may be required due to differences in protocols and secondary/substrate sensitivity.

Immunogen

This phospho-Rb antibody was produced from rabbits immunized with a KLH conjugated synthetic phosphopeptide corresponding to amino acid residues surrounding phosphorylated S608 of human Rb.

Storage

Aliquot the phospho-Rb antibody and store frozen at -20oC or colder. Avoid repeated freeze-thaw cycles.