

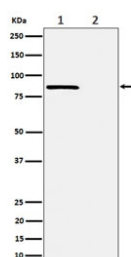
Phospho-Rad17 Antibody (pS656) [clone 28R30] (RQ8273)

Catalog No.	Formulation	Size
RQ8273	Antibody in PBS with 0.02% sodium azide, 50% glycerol and 0.4-0.5mg/ml BSA	100 ul

Recombinant **RABBIT MONOCLONAL**

[Bulk quote request](#)

Availability	1-3 weeks
Species Reactivity	Human
Format	Purified
Host	Rabbit
Clonality	Recombinant Rabbit Monoclonal
Isotype	Rabbit IgG
Clone Name	28R30
Purity	Affinity chromatography
UniProt	O75943
Applications	Western Blot : 1:500-1:2000
Limitations	This Phospho-Rad17 antibody is available for research use only.



Western blot testing of lysate from human HeLa cells, 1) untreated and 2) Calyculin A-treated, with Phospho-Rad17 antibody.

Description

Rad17 is essential for sustained cell growth, maintenance of chromosomal stability, and ATR-dependent checkpoint activation upon DNA damage. [UniProt]

Application Notes

Optimal dilution of the Phospho-Rad17 antibody should be determined by the researcher.

Immunogen

A synthetic peptide derived from the area surrounding phosphorylated serine 656 of human Rad17 was used as the immunogen for the Phospho-Rad17 antibody.

Storage

Store the Phospho-Rad17 antibody at -20oC.