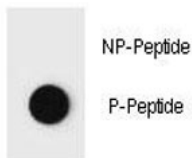


## Phospho-PTEN Antibody (pT382) (F48739)

Catalog No.	Formulation	Size
F48739-0.4ML	In 1X PBS, pH 7.4, with 0.09% sodium azide	0.4 ml
F48739-0.08ML	In 1X PBS, pH 7.4, with 0.09% sodium azide	0.08 ml

[Bulk quote request](#)

<b>Availability</b>	1-3 business days
<b>Species Reactivity</b>	Human
<b>Predicted Reactivity</b>	Mouse, Xenopus
<b>Format</b>	Antigen affinity purified
<b>Host</b>	Rabbit
<b>Clonality</b>	Polyclonal (rabbit origin)
<b>Isotype</b>	Rabbit Ig
<b>Purity</b>	Antigen affinity
<b>UniProt</b>	P60484
<b>Applications</b>	Dot Blot : 1:500
<b>Limitations</b>	This phospho-PTEN antibody is available for research use only.



Dot blot analysis of phospho-PTEN antibody. 50ng of phos-peptide or nonphos-peptide per dot were spotted.

## Description

This gene was identified as a tumor suppressor that is mutated in a large number of cancers at high frequency. The protein encoded this gene is a phosphatidylinositol-3,4,5-trisphosphate 3-phosphatase. It contains a tensin like domain as well as a catalytic domain similar to that of the dual specificity protein tyrosine phosphatases. Unlike most of the protein tyrosine phosphatases, this protein preferentially dephosphorylates phosphoinositide substrates. It negatively regulates intracellular levels of phosphatidylinositol-3,4,5-trisphosphate in cells and functions as a tumor suppressor by negatively

regulating AKT/PKB signaling pathway.

## Application Notes

Titration of the phospho-PTEN antibody may be required due to differences in protocols and secondary/substrate sensitivity.

## Immunogen

This phospho-PTEN antibody was produced from rabbits immunized with a KLH conjugated synthetic phosphopeptide corresponding to amino acid residues surrounding pT382 of human PTEN.

## Storage

Aliquot the phospho-PTEN antibody and store frozen at -20oC or colder. Avoid repeated freeze-thaw cycles.